

# Finishes & Materials

landscapeforms®

## Vivid Series - Powdercoated Metal\* (Fine Texture)



Clay



Lemon



Mango



Loll Sunset Orange



Chili



Loll Apple Red



Loll Leaf Green



Moss

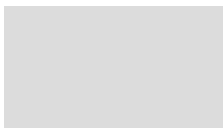


Forest

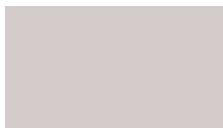


Loll Navy Blue

## Neutral Series - Powdercoated Metal\*



Silver Metallic



Mercury Metallic



Steel Metallic



Bronze Metallic



Titanium Metallic

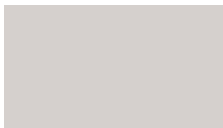


Gloss Black



Gloss White

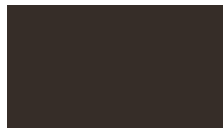
## Architectural Series - Powdercoated Metal\* (Fine Texture)



Fog



Obsidian



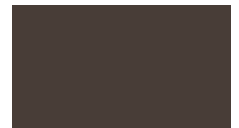
Matte Black



Terra



Nutmeg



Onyx



Sage



Blue Ash



Dusk

# Finishes & Materials



## Urbidermis Furniture - Powdercoated Metal (Low Sheen)\*



Urbidermis Aluminum    Urbidermis Dark Grey (LF Dusk)    Urbidermis Light Grey

## Urbidermis Luminaire & Mounting Brackets - Powdercoated Metal (Gloss)\*



Aluminum Silver    Dusk    Black

## Bravo Bistro - Powdercoated Metal



Cadmium    Carbon

## Escofet - High Density Polyethylene (HDPE)



Black    White    Steel Blue    Brilliant Blue    Orange    Lime Green



Colza Yellow


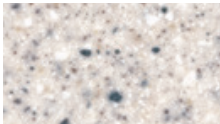
# Finishes & Materials



## Polyethylene\*

					
Black	Blue Bell	Daisy	Fog	Grass	Otter
					
Pine	Sky	Millstone (only available with Rosa)	Habanero (only available with Chill)	Silver (only available with Annapolis Bollard, Plexus Litter, Presidio Litter, and Scarborough Litter)	

## Solid Surface Marneaux®

					
Blue	Calgary	Celery	Jade	Mist	Pueblo

## Stainless Steel



Stainless Steel

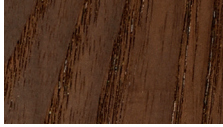
## Loll Designs - High-Density Polyethylene (H.D.P.E.)\*

					
Black	Charcoal Grey	Apple Red	Leaf Green	Sunset Orange	Navy Blue

# Finishes & Materials



## Woodgrains (Exterior, No Finish)\*



Domestically Sourced Thermally Modified Ash



Ipe (P)



Redwood



Jarrah (P)

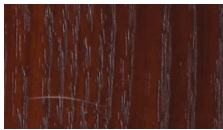


Teak



Alaskan Yellow Cedar

## Woodgrains (Interior, LF-80 Finish)\*



Domestically Sourced Thermally Modified Ash



Oak



Maple



Jarrah (P)

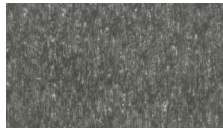
## Polysite®



Bark

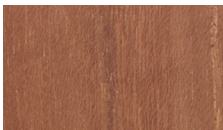


Black



Driftwood

## Woodgrains (Exterior, No Finish, Wellspring)\*



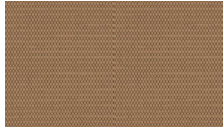
Teak

# Finishes & Materials

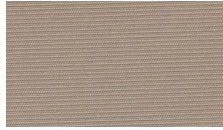
## WeatherMAX™ Canopy Fabric (Tuuci MEGA MAX)



Abyss



Almond



Barley



Basalt



Daffodil



Deep Emerald



Earth



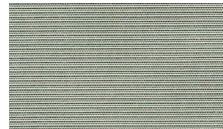
Georgetown



Meteorite



Moonstone



Squall



Whisper Gray

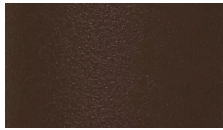


White Cap

## Powdercoat Finishes (Tuuci MEGA MAX)



Black Sea



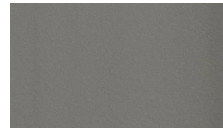
Espresso



Glacier White



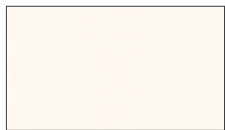
Graphite



Night Fog



Oyster

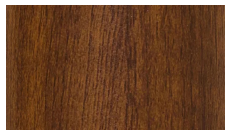


Sandbar

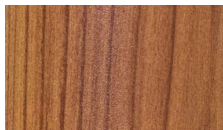


Silver Sand

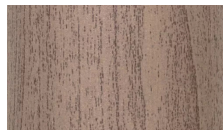
## Aluma-Teak Finishes (Tuuci MEGA MAX)



Java



Natural



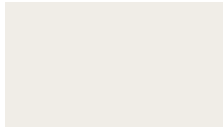
Weathered

# Finishes & Materials

## Sunbrella® Canopy Fabric (Tuuci)



Forest Green



Natural



Taupe

---

## Powdercoated Finishes (Tuuci Ocean Master Series)



Polished Aluminum

---

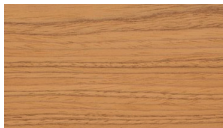
## Powdercoated Finishes (Tuuci Bay Master Series)



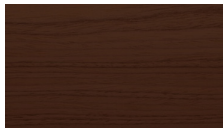
Satin Anodized Finish

---

## Aluma-Teak Finishes (Tuuci Plantation Series)



Natural



Java

---

## Sunbrella® Canopy Fabric (Equinox)



Forest Green



Natural



Tuscan

# Finishes & Materials

## Phifertex® Plus



White



Metallica Platinum



Black

---

## MeldStone™\*



Natural White



Natural Ecu



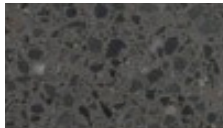
Natural Grey

---

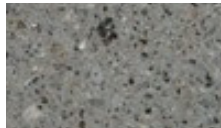
## Escofet Concrete (with Acid-Etched Finish)



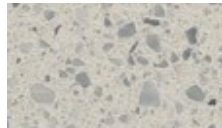
Beige



Black



Grey



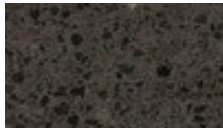
White

---

## Escofet Slimconcrete® (UHPC, Acid-Etched Finish)



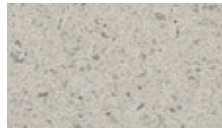
Beige



Black



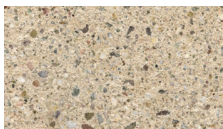
Grey



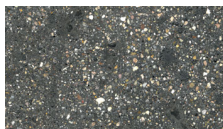
White

---

## Escofet Cast Stone (Polished Finish, Socrates)



Beige



Black



Grey



White



## Powdercoated Metal

Powdercoated Metal Pangard II® Polyester Powdercoat is a hard, yet flexible, finish that resists rusting, chipping, peeling and fading. In addition to colors shown, a wide selection of optional and custom colors may be specified for an upcharge.

- \* All colors and patterns shown are approximate and may vary from sample and final.

## Bravo Bistro Powdercoated Metal

All components are first e-coated, then powdercoated providing surface durability, resistance to scratching and corrosion, and protection from UV light and other elements. Tables and chairs are only available in Cadmium and Carbon, colors exclusive to Bravo Bistro.

- \* All colors and patterns shown are approximate and may vary from sample and final.

## Urbidermis Powdercoated Metal

Urbidermis products feature three exclusive low sheen and gloss powdercoat colors—Aluminum, Aluminum Silver, Black, Dark Grey, Dusk, and Light Grey—chosen to accentuate the modern, minimalist design language for which the firm is known. These exclusive colors utilize the same material composition and application process as Landscape Forms' Pangard II® Polyester Powdercoat, a hard, yet flexible finish that resists rusting, chipping, peeling and fading.

## Escofet High Density Polyethylene

High-density polyethylene (HDPE) rotational molding allows the manufacture of lightweight products, it is recycled and recyclable, resistant, durable, easy to install and can also incorporate LED light for backlighting - for white only, Stul not included. It is produced in a multitude of shades, allowing you to play with color and compositions in each project. The black color is made from 100% recycled material.

## Polyethylene

Polyethylene Rotationally-molded polyethylene is produced by tumbling polyethylene powder in a mold under heat. The material provides strong structure with integral color that stands up to heavy use and is easily cleaned. Aggregate colors are subject to an upcharge.

- \* All colors and patterns shown are approximate and may vary from sample and final.
- \* Colors are not available on all products. Please contact Customer Service for more information.

## Solid Surface Marneaux®

Solid Surface Marneaux® This 100% acrylic resin solid-surface material resists scratching, staining, chipping and cracking. Weather, harsh chemicals and UV rays have virtually no effect on the “throughbody” color or structural integrity of the material. Optional colors are available at an additional charge.

## Loll Designs High Density Polyethylene

Loll Designs High Density Polyethylene is made of 100% recycled HDPE (high density polyethylene) sourced primarily from recycled milk jugs.

## Woodgrains (Exterior, No Finish)

Exterior woods weather to a warm, pewter gray; no finish is applied so no maintenance is required. Available in Ipe, Jarrah, and Domestically Sourced Thermally Modified Ash (DSTMA); and if applicable, Redwood, Teak, or Alaskan Yellow Cedar. Pricing for standard woods and options varies. (P) = Premium Woods

- \* All colors and woodgrains shown are approximate and may vary

## Woodgrains (Interior, LF-80 Finish)

Interior woods are finished with Landscape Forms' exclusive LF-80 wood finish, a clear, catalyzed acrylic lacquer. Available in Oak, Maple, Jarrah, and Domestically Sourced Thermally Modified Ash (DSTMA). Pricing for standard woods and options varies. (P) = Premium Woods

- \* All colors and woodgrains shown are approximate and may vary

## Polysite®

Polysite® Made of recycled 100% high-density polyethylene, polysite will not rot, splinter or crack and resists moisture, corrosive substances and insects.

- \* All colors and patterns shown are approximate and may vary from sample and final.
- \* All colors and woodgrains shown are approximate and may vary from sample and final.

## Sunbrella® Umbrella Fabric

Sunbrella® Umbrella Fabric Marine-grade fabric cover, 100% solutiondyed fiber treated for a high degree of fade-resistance; mildew proof; meets California Technical Bulletin #117 Section E (CS-191-53).



# Finishes & Materials

landscapeforms®

## **WeatherMAX® 80**

WeatherMAX® 80 is a patented outdoor performance fabric developed for demanding applications and environments. Utilized in the canopy for the Tuuci Ocean Master MEGA MAX Classic parasol, WeatherMAX® 80 delivers super high strength and durability combined with long-term color retention. WeatherMAX® 80 is water resistant, breathable, abrasion resistant, 100% recyclable, and made in the USA.

## **Phifertex® Plus**

Phifertex® Plus is designed and engineered for a wide variety of applications that demand extra strength and/or dimensional stability. Phifertex Plus is highly durable, easy to clean and mildew, stain and fade resistant.

## **Escofet High Density Polyethylene**

High-density polyethylene (HDPE) rotational molding allows the manufacture of lightweight products, it is recycled and recyclable, resistant, durable, easy to install and can also incorporate LED light for backlighting - for white only, Stul not included. It is produced in a multitude of shades, allowing you to play with color and compositions in each project. The black color is made from 100% recycled material.

## **MeldStone™**

MeldStone™ (Ultra-high performance concrete) A highly engineered material that enables casting of lighter weight, thin-profile forms with exceptional strength and high resistance to compression, bending, impact and wear.

\* All colors and patterns shown are approximate and may vary from sample and final.

## **Escofet Cast Stone (Socrates)**

Socrates benches are manufactured from cast stone in the USA in partnership with Escofet. Cast stone is a refined and highly durable material intended to simulate natural-cut stone. Cast stone products feature high compressive strength, are resistant to weathering and absorption, and require little maintenance. Nonfading pigment options include Grey, Black, White and Beige.

*Visit [landscapeforms.com](https://landscapeforms.com) for more information. Specifications are subject to change without notice. Landscape Forms supports the Landscape Architecture Foundation at the Second Century level.*  
©2023 Landscape Forms, Inc.

[landscapeforms.com](https://landscapeforms.com) | [specify@landscapeforms.com](mailto:specify@landscapeforms.com)