

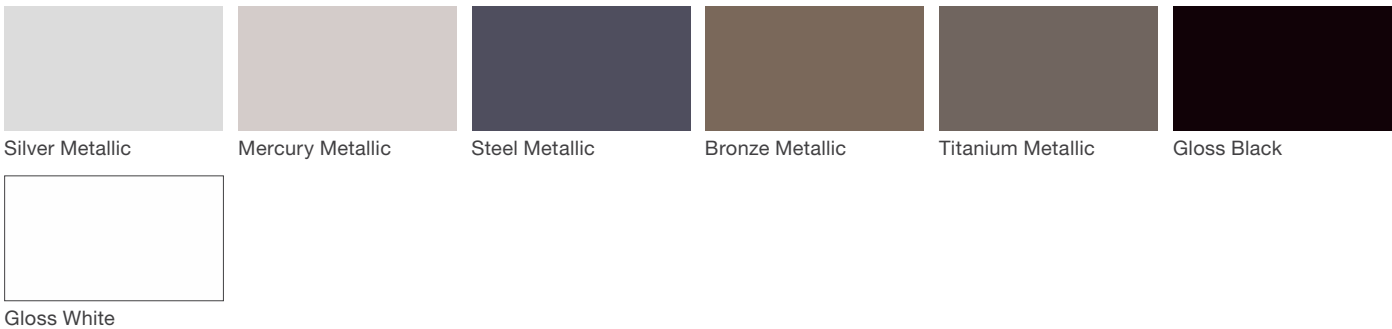
# Finishes & Materials



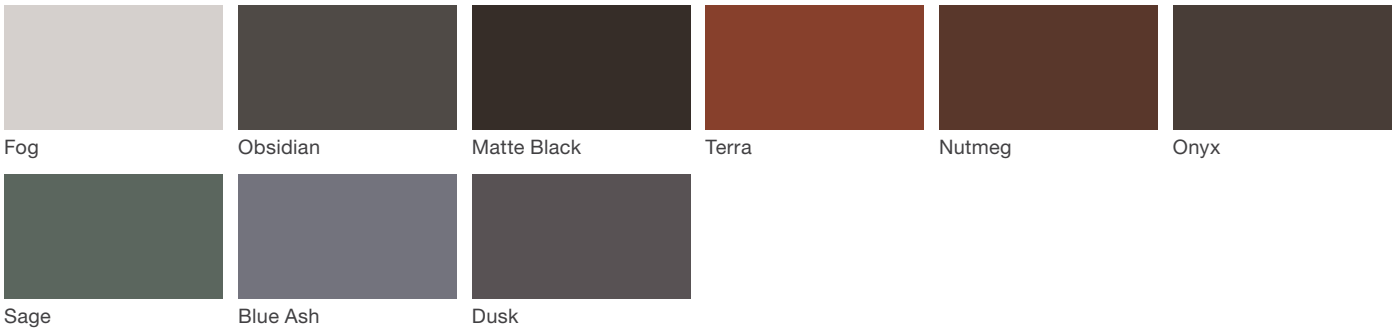
## Vivid Series - Powdercoated Metal\* (Fine Texture)



## Neutral Series - Powdercoated Metal\*



## Architectural Series - Powdercoated Metal\* (Fine Texture)



# Finishes & Materials



## Urbidermis Furniture - Powdercoated Metal (Low Sheen)\*



Urbidermis Aluminum    Urbidermis Dark Grey (LF Dusk)    Urbidermis Light Grey

## Urbidermis Luminaire & Mounting Brackets - Powdercoated Metal (Gloss)\*



Aluminum Silver    Dusk    Black

## Bravo Bistro - Powdercoated Metal



Cadmium    Carbon

## Escofet - High Density Polyethylene (HDPE)



Black    White    Steel Blue    Brilliant Blue    Orange    Lime Green



Colza Yellow

# Finishes & Materials



## Polyethylene\*

					
Black	Blue Bell	Daisy	Fog	Grass	Otter
					
Pine	Sky	Millstone (only available with Rosa)	Habanero (only available with Chill)	Silver (only available with Annapolis Bollard, Plexus Litter, Presidio Litter, and Scarborough Litter)	

## Solid Surface Marneaux®

					
Blue	Calgary	Celery	Jade	Mist	Pueblo

## Stainless Steel



Stainless Steel

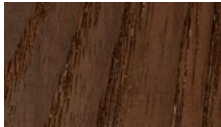
## Loll Designs - High-Density Polyethylene (H.D.P.E.)\*

					
Black	Charcoal Grey	Apple Red	Leaf Green	Sunset Orange	Navy Blue

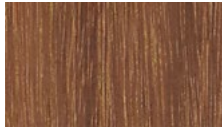
# Finishes & Materials



## Woodgrains (Exterior, No Finish)\*



Domestically Sourced Thermally Modified Ash



Ipe (P)



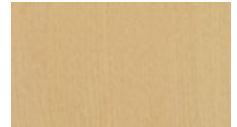
Redwood



Jarrah (P)



Teak



Alaskan Yellow Cedar



Bamboo (P)

## Woodgrains (Interior, LF-80 Finish)\*



Domestically Sourced Thermally Modified Ash



Oak



Maple



Jarrah (P)

## Polysite®



Bark



Black



Driftwood



White (only available on Lakeside Bench)

## Woodgrains (Exterior, No Finish, Wellspring)\*

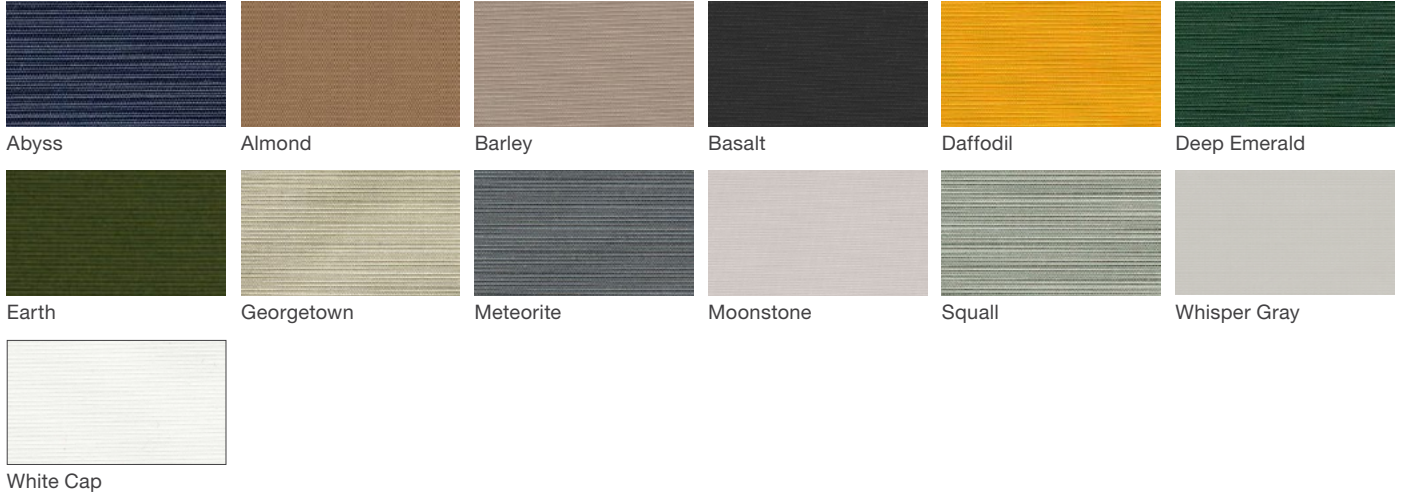


Teak

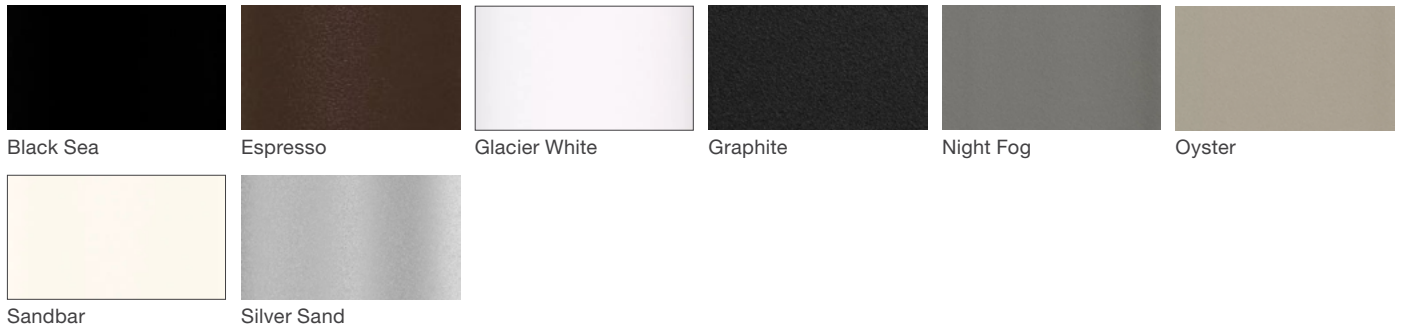
# Finishes & Materials



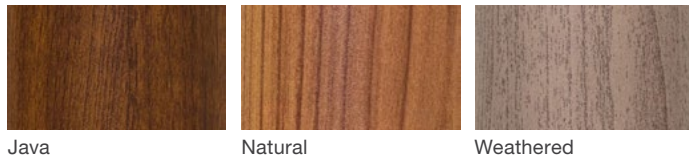
## WeatherMAX™ Canopy Fabric (Tuuci MEGA MAX)



## Powdercoat Finishes (Tuuci MEGA MAX)



## Aluma-Teak Finishes (Tuuci MEGA MAX)



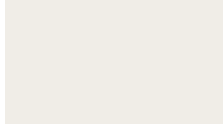
# Finishes & Materials

landscapeforms

## Sunbrella® Canopy Fabric (Tuuci)



Forest Green



Natural



Taupe

---

## Powdercoated Finishes (Tuuci Ocean Master Series)



Polished Aluminum

---

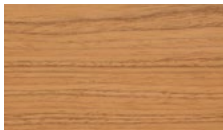
## Powdercoated Finishes (Tuuci Bay Master Series)



Satin Anodized Finish

---

## Aluma-Teak Finishes (Tuuci Plantation Series)



Natural



Java

---

## Sunbrella® Canopy Fabric (Equinox)



Forest Green



Natural



Tuscan

# Finishes & Materials

landscapeforms

## Phifertex® Plus



White



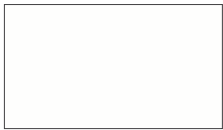
Metallica Platinum



Black

---

## MeldStone™\*



Natural White



Natural Ecu



Natural Grey

---

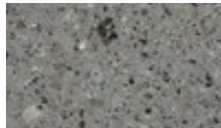
## Escofet Concrete (with Acid-Etched Finish)



Beige



Black



Grey



White

---

## Escofet Slimconcrete® (UHPC, Acid-Etched Finish)



Beige



Black



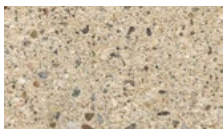
Grey



White

---

## Escofet Cast Stone (Polished Finish, Socrates)



Beige



Black



Grey



White

# Finishes & Materials



## Vivid Series - Powdercoated Metal\* (Fine Texture, Litters Only)



## Summit Tradewind Fabric





# Finishes & Materials



## Cool RAL - Powdercoated Metal

(Scenic Structure: Structure Frame, Roof Louvers, Panel Louvers, Solid Walls, Accessories)



RAL7035



RAL7037



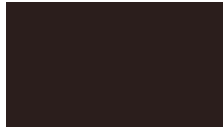
RAL7015



RAL7016



RAL7021



RAL9004



RAL9005

## Warm RAL - Powdercoated Metal

(Scenic Structure: Structure Frame, Roof Louvers, Panel Louvers, Solid Walls, Accessories)



RAL1019



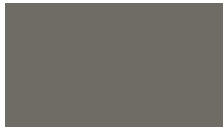
RAL7006



RAL7030



RAL7039



RAL7022



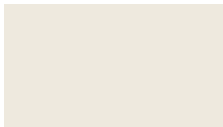
RAL8019



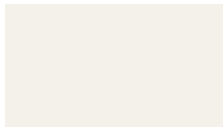
RAL8022

## White RAL - Powdercoated Metal

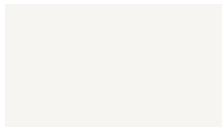
(Scenic Structure: Structure Frame, Roof Louvers, Panel Louvers, Solid Walls, Accessories)



RAL9001



RAL9010



RAL9016

## Metallic RAL - Powdercoated Metal

(Scenic Structure: Structure Frame, Roof Louvers, Panel Louvers, Solid Walls, Accessories)



RAL9006



RAL9007



DB703

# Finishes & Materials



## Wooddesign - Powdercoated Metal\* (Scenic Structure: Roof Louvers, Panel Louvers)

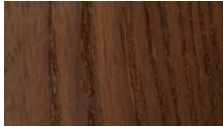


White Oak

Natural Oak

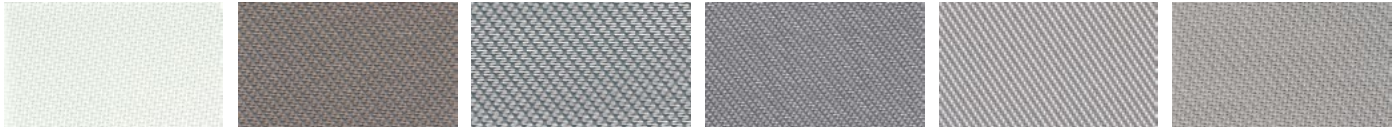
Walnut

## Scenic Woodgrains - Exterior, No Finish\* (Louvered Panels, In-line Bar Table Tops, In-line Bench, Peninsula Table Tops)



Thermally Modified Ash

## Sergé - Fixscreen® Fiberglass Fabric\* (Scenic Structure, 5% Openness)



SC2002

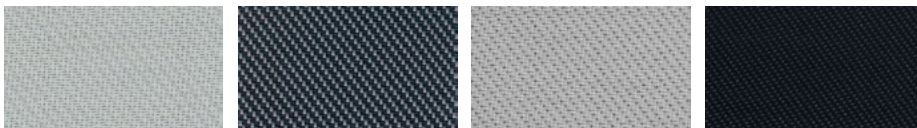
SC0110

SC0102

SCM31

SC0207

SC0707 (RAL 7038)



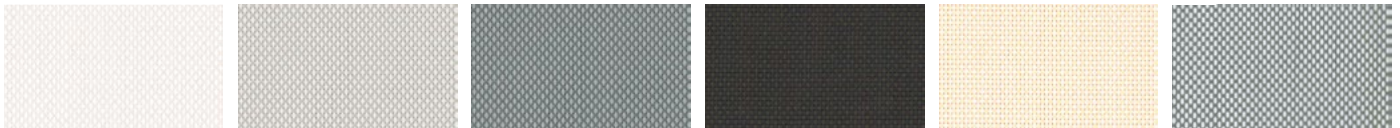
SC4949 (RAL 9006)

SC0130

SC0101 (RAL 7037)

SC3030 (RAL 7021)

## Natté - Fixscreen® Fiberglass Fabric\* (Scenic Structure, 3% Openness)



N-0202

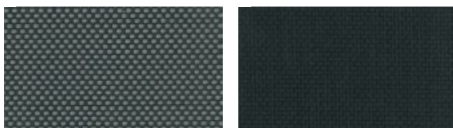
N-0207

N-0701

N-3006

N-0220

N-0201



N-3001

N-3030

# Finishes & Materials

## Privacy - Fixscreen® Fiberglass Fabric\* (Scenic Structure, 1% Openness)



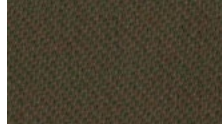
P-0202



P-0707



P-0101



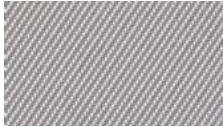
P-0606



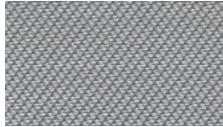
P-3030



P-2020



P-0207



P-0102



P-0130

## Tuffscreen - Fixscreen® Insect Mesh\* (Scenic Structure)



Tuffscreen CF1/CF2

## Powdercoated Metal

Powdercoated Metal Pangard II® Polyester Powdercoat is a hard, yet flexible, finish that resists rusting, chipping, peeling and fading. In addition to colors shown, a wide selection of optional and custom colors may be specified for an upcharge.

\* All colors and patterns shown are approximate and may vary from sample and final.

## Bravo Bistro Powdercoated Metal

All components are first e-coated, then powdercoated providing surface durability, resistance to scratching and corrosion, and protection from UV light and other elements. Tables and chairs are only available in Cadmium and Carbon, colors exclusive to Bravo Bistro.

\* All colors and patterns shown are approximate and may vary from sample and final.

## Urbidermis Powdercoated Metal

Urbidermis products feature three exclusive low sheen and gloss powdercoat colors—Aluminum, Aluminum Silver, Black, Dark Grey, Dusk, and Light Grey—chosen to accentuate the modern, minimalist design language for which the firm is known. These exclusive colors utilize the same material composition and application process as Landscape Forms' Pangard II® Polyester Powdercoat, a hard, yet flexible finish that resists rusting, chipping, peeling and fading.

## Loll Designs High Density Polyethylene

Loll Designs High Density Polyethylene Loll Designs High Density Polyethylene is made from recycled HDPE (high density polyethylene) sourced primarily from recycled milk jugs. Please note that when the Harvest product is placed in FULL direct sun, testing has demonstrated that the following Loll HDPE colors have exhibited NO significant change of color over time: Black, Charcoal Grey, and Navy Blue. Testing has also indicated that the following HDPE colors have shown INCREASED change of color over time: Apple Red, Sunset Orange, and Leaf Green. Please note that the changing of color of the HDPE can occur at a different rate than the changing of color of the powdercoated aluminum.

## Polyethylene

Polyethylene Rotationally-molded polyethylene is produced by tumbling polyethylene powder in a mold under heat. The material provides strong structure with integral color that stands up to heavy use and is easily cleaned. Aggregate colors are subject to an upcharge.

\* All colors and patterns shown are approximate and may vary from sample and final.

\* Colors are not available on all products. Please contact Customer Service for more information.

## Solid Surface Marneaux®

Solid Surface Marneaux® This 100% acrylic resin solid-surface material resists scratching, staining, chipping and cracking. Weather, harsh chemicals and UV rays have virtually no effect on the “throughbody” color or structural integrity of the material. Optional colors are available at an additional charge.

## Loll Designs High Density Polyethylene

Loll Designs High Density Polyethylene is made of 100% recycled HDPE (high density polyethylene) sourced primarily from recycled milk jugs.

## Woodgrains (Exterior, No Finish)

Exterior woods weather to a warm, pewter gray; no finish is applied so no maintenance is required. Available in Ipe, Jarrah, Bamboo, and Domestically Sourced Thermally Modified Ash (DSTMA); and if applicable, Redwood, Teak, or Alaskan Yellow Cedar. Pricing for standard woods and options varies. (P) = Premium Woods

\* All colors and woodgrains shown are approximate and may vary

## Woodgrains (Interior, LF-80 Finish)

Interior woods are finished with Landscape Forms' exclusive LF-80 wood finish, a clear, catalyzed acrylic lacquer. Available in Oak, Maple, Jarrah, and Domestically Sourced Thermally Modified Ash (DSTMA). Pricing for standard woods and options varies. (P) = Premium Woods

\* All colors and woodgrains shown are approximate and may vary

## Polysite®

Polysite® Made of recycled 100% high-density polyethylene, polysite will not rot, splinter or crack and resists moisture, corrosive substances and insects.

\* All colors and patterns shown are approximate and may vary from sample and final.

\* All colors and woodgrains shown are approximate and may vary from sample and final.

## Sunbrella® Umbrella Fabric

Sunbrella® Umbrella Fabric Marine-grade fabric cover, 100% solutiondyed fiber treated for a high degree of fade-resistance; mildew proof; meets California Technical Bulletin #117 Section E (CS-191-53).

## WeatherMAX® 80

WeatherMAX® 80 is a patented outdoor performance fabric developed for demanding applications and environments. Utilized in the canopy for the Tuuci Ocean Master MEGA MAX Classic parasol, WeatherMAX® 80 delivers super high strength and durability combined with long-term color retention. WeatherMAX® 80 is water resistant, breathable, abrasion resistant, 100% recyclable, and made in the USA.

## Phifertex® Plus

Phifertex® Plus is designed and engineered for a wide variety of applications that demand extra strength and/or dimensional stability. Phifertex Plus is highly durable, easy to clean and mildew, stain and fade resistant.

## Escofet High Density Polyethylene

High-density polyethylene (HDPE) rotational molding allows the manufacture of lightweight products, it is recycled and recyclable, resistant, durable, easy to install and can also incorporate LED light for backlighting - for white only, Stul not included. It is produced in a multitude of shades, allowing you to play with color and compositions in each project. The black color is made from 100% recycled material.

## MeldStone™

MeldStone™ (Ultra-high performance concrete) A highly engineered material that enables casting of lighter weight, thin-profile forms with exceptional strength and high resistance to compression, bending, impact and wear.

\* All colors and patterns shown are approximate and may vary from sample and final.

## Escofet Cast Stone (Socrates)

Socrates benches are manufactured from cast stone in the USA in partnership with Escofet. Cast stone is a refined and highly durable material intended to simulate natural-cut stone. Cast stone products feature high compressive strength, are resistant to weathering and absorption, and require little maintenance. Nonfading pigment options include Grey, Black, White and Beige.

## Summit Tradewind Fabric

Summit Tradewind is 100% solution-dyed acrylic fabric that is stain, mold and fade resistant, breathable, water repellent, bleach cleanable, and designed for use in both indoor and outdoor environments. Summit Tradewind fabrics achieve their performance through sustainable chemical finishing, a process that provides high resistance to weather and wear without the use of PFAS "forever" chemicals. Maintaining Tradewind fabric is simple, requiring only vacuuming to remove loose dirt and blotting with lukewarm water and mild detergent to remove light stains. Should persistent staining occur, cleaning with chlorine bleach will not affect the coloration of the solution-dyed acrylic fiber, provided it is properly diluted.

## RAL Powdercoated Metal

Aluminum components are pre-treated with Seaside Quality A and finished with RAL powdercoat. Seaside Quality A pre-treatment protects aluminum profiles against the effects of aggressive environments, such as coastal or heavy industrial areas. Colors offered are exclusive to Scenic.

## Wooddesign Powdercoated Metal

Colorfast powdercoating with woodgrain texture offers the natural warm appearance of wood, but with all the benefits and easy maintenance of aluminum. Exclusive to Scenic's roof louvers and panel louvers, wooddesign powdercoat is available in three designs, including White Oak, Natural Oak and Walnut.

## Scenic Woodgrains (Exterior, No Finish)

Exterior woods weather to a warm, pewter gray; no finish is applied so no maintenance is required. Available in Thermally Modified Ash (TMA).

## Fixscreen® Fiberglass Fabrics

Fiberglass fabrics are made of woven glass fibers with a PVC coating and are available in many colors. Fiberglass fabrics keep their shape and are resistant to moisture and heat as well as being rot-proof and color-fast. Fiberglass fabrics guarantee an excellent view to the outside. The fiberglass fabrics are also available with a Crystal window, the full width, providing a crystal-clear view to the outside.

\* All colors and woodgrains shown are approximate and may vary.

*Visit [landscapeforms.com](https://landscapeforms.com) for more information. Specifications are subject to change without notice. Landscape Forms supports the Landscape Architecture Foundation at the Second Century level. ©2024 Landscape Forms, Inc.*

[landscapeforms.com](https://landscapeforms.com) | [specify@landscapeforms.com](mailto:specify@landscapeforms.com)