

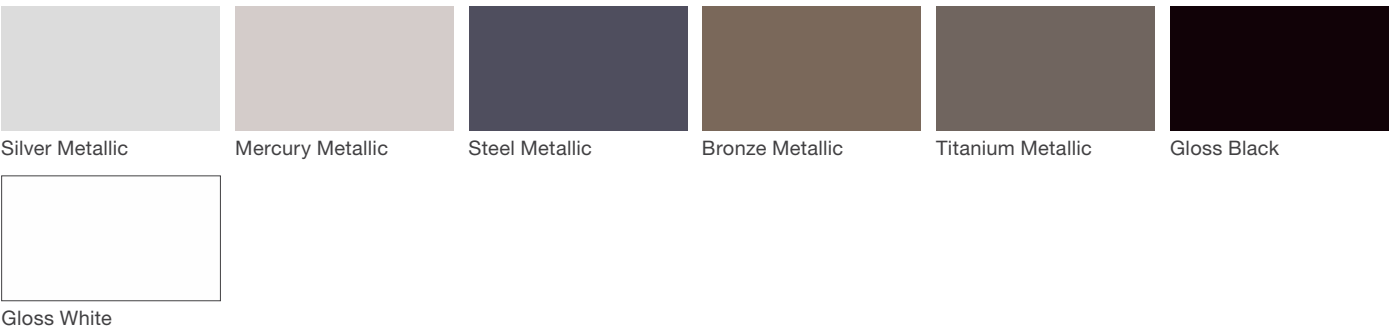
# Finishes & Materials

landscapeforms

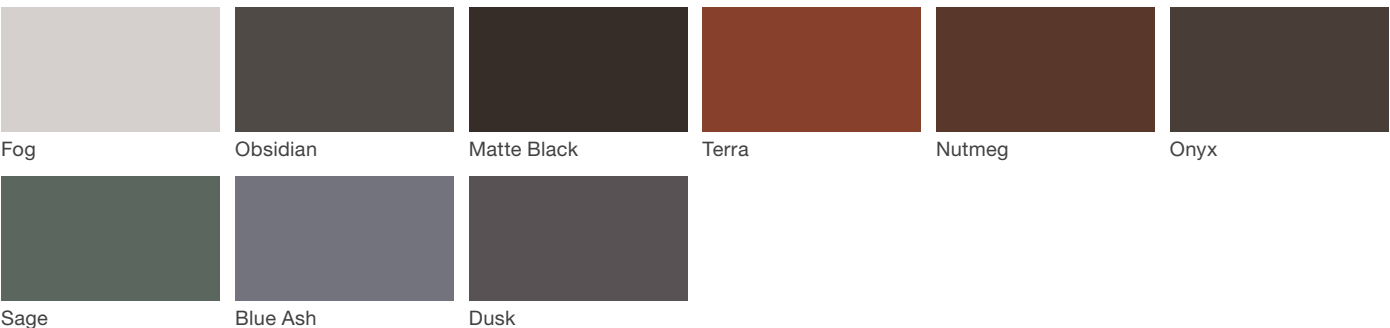
## Vivid Series - Powdercoated Metal\* (Fine Texture)



## Neutral Series - Powdercoated Metal\*



## Architectural Series - Powdercoated Metal\* (Fine Texture)



# Finishes & Materials

landscapeforms

## Urbidermis Furniture - Powdercoated Metal (Low Sheen)\*



Urbidermis Aluminum



Urbidermis Dark Grey  
(LF Dusk)



Urbidermis Light Grey

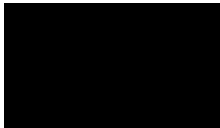
## Urbidermis Luminaire & Mounting Brackets - Powdercoated Metal (Gloss)\*



Aluminum Silver



Dusk



Black

## Bravo Bistro - Powdercoated Metal



Cadmium



Carbon

## Escofet - High Density Polyethylene (HDPE)



Black



White



Steel Blue



Brilliant Blue



Orange



Lime Green



Colza Yellow

# Finishes & Materials

landscapeforms

## Polyethylene\*



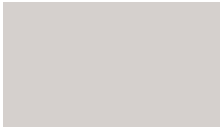
Black



Blue Bell (only available with Rosa)



Daisy (only available with Rosa)



Fog



Fog I (only available with Rosa)



Grass (only available with Rosa)



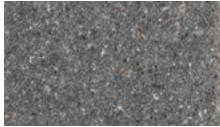
Otter (only available with Rosa)



Pine (only available with Rosa)



Sky (only available with Rosa)



Millstone (only available with Rosa)



Habanero (only available with Chill)



Silver (only available with Annapolis Bollard)



Loll Sky Blue

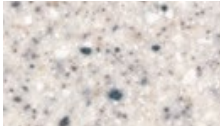


Loll Leaf Green

## Solid Surface Marneaux®



Blue



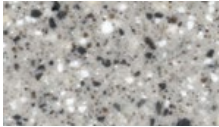
Calgary



Celery



Jade



Mist



Pueblo

## Stainless Steel



Stainless Steel

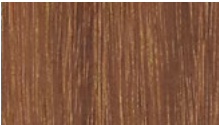
# Finishes & Materials

landscapeforms

## Woodgrains (Exterior, No Finish)\*



Domestically Sourced  
Thermally Modified Ash



Ipe (P)



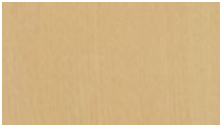
Redwood



Jarrah (P)



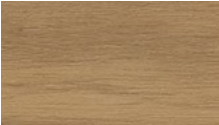
Teak



Alaskan Yellow Cedar



Bamboo (P)



Escofet Teak (only  
available with Serp)



Kebony (P)

## Woodgrains (Interior, LF-80 Finish)\*



Domestically Sourced  
Thermally Modified Ash



Oak



Maple



Jarrah (P)

## Polysite®



Bark



Black

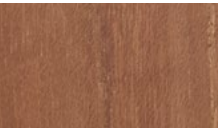


Driftwood



White (only available on  
Lakeside Bench)

## Woodgrains (Exterior, No Finish, Wellspring)\*

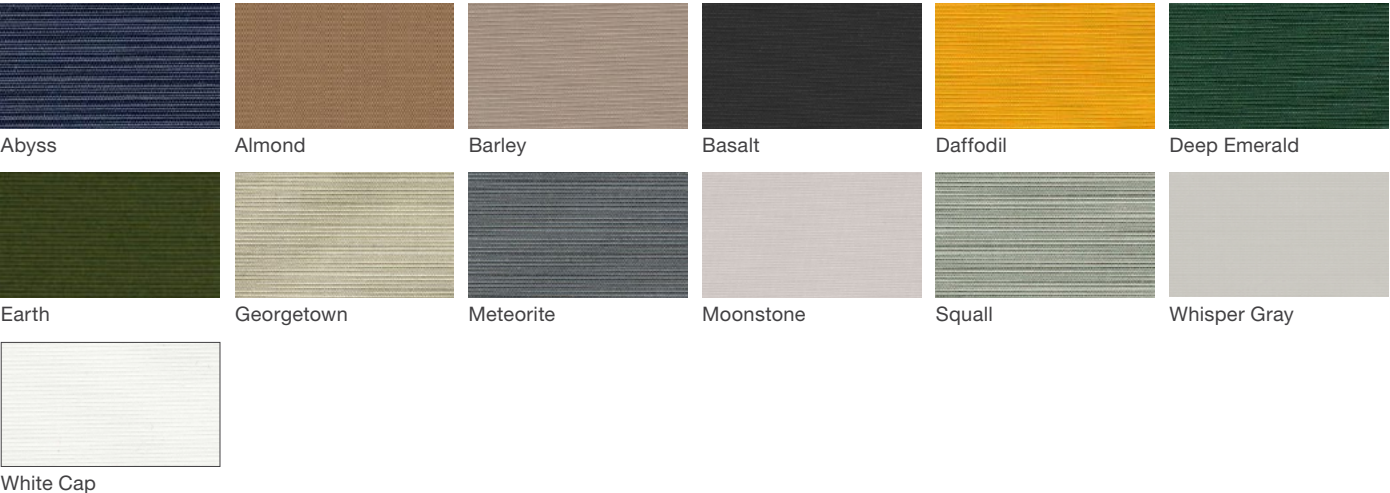


Teak

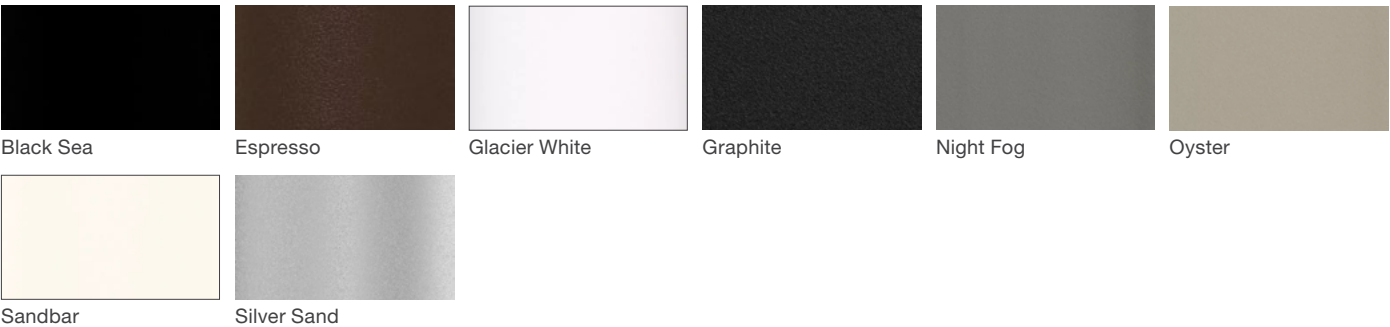
# Finishes & Materials

landscapeforms

## WeatherMAX™ Canopy Fabric (Tuuci MEGA MAX)



## Powdercoat Finishes (Tuuci MEGA MAX)



## Aluma-Teak Finishes (Tuuci MEGA MAX)



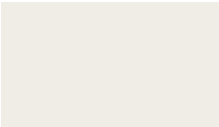
# Finishes & Materials

landscapeforms

## Sunbrella® Canopy Fabric (Tuuci)



Forest Green



Natural



Taupe

---

## Powdercoated Finishes (Tuuci Ocean Master Series)



Polished Aluminum

---

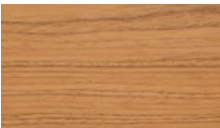
## Powdercoated Finishes (Tuuci Bay Master Series)



Satin Anodized Finish

---

## Aluma-Teak Finishes (Tuuci Plantation Series)



Natural



Java

---

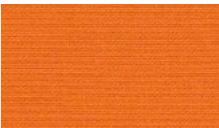
## Sunbrella® Canopy Fabric (Equinox)



Forest Green



Natural



Tuscan

# Finishes & Materials

landscapeforms

## Phifertex® Plus



White



Metallica Platinum



Black

---

## Escofet Concrete (with Polished Finish)



Beige



Black



Grey



White

---

## Escofet Concrete (with Acid-Etched Finish)



Beige



Black



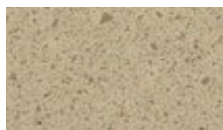
Grey



White

---

## Escofet Slimconcrete® (UHPC, Acid-Etched Finish)



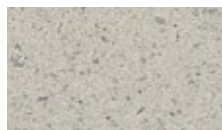
Beige



Black



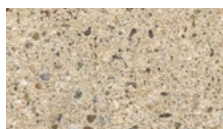
Grey



White

---

## Escofet Cast Stone (Polished Finish, Socrates)



Beige



Black



Grey



White

# Finishes & Materials

landscapeforms

## Vivid Series - Powdercoated Metal\* (Fine Texture, Litters Only)



## Summit Tradewind Fabric



## Loll Designs - High-Density Polyethylene (H.D.P.E.)\*





# Finishes & Materials

landscapeforms

## Cool RAL - Powdercoated Metal

(Scenic Structure: Structure Frame, Roof Louvers, Panel Louvers, Solid Walls, Accessories)



RAL7035



RAL7037



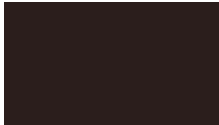
RAL7015



RAL7016



RAL7021



RAL9004



RAL9005

## Warm RAL - Powdercoated Metal

(Scenic Structure: Structure Frame, Roof Louvers, Panel Louvers, Solid Walls, Accessories)



RAL1019



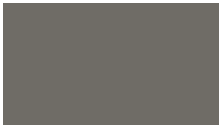
RAL7006



RAL7030



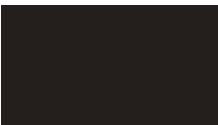
RAL7039



RAL7022



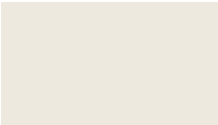
RAL8019



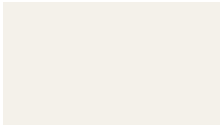
RAL8022

## White RAL - Powdercoated Metal

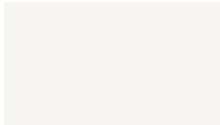
(Scenic Structure: Structure Frame, Roof Louvers, Panel Louvers, Solid Walls, Accessories)



RAL9001



RAL9010



RAL9016

## Metallic RAL - Powdercoated Metal

(Scenic Structure: Structure Frame, Roof Louvers, Panel Louvers, Solid Walls, Accessories)



RAL9006



RAL9007



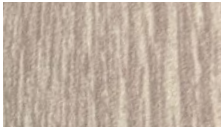
DB703

# Finishes & Materials

landscapeforms

## Wooddesign - Powdercoated Metal\*

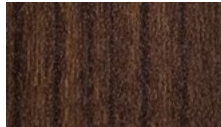
(Scenic Structure: Roof Louvers, Panel Louvers)



White Oak



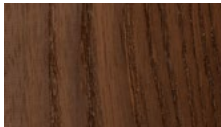
Natural Oak



Walnut

## Scenic Woodgrains - Exterior, No Finish\*

(Louvered Panels, In-line Bar Table Tops, In-line Bench, Peninsula Table Tops)



Thermally Modified Ash

## Sergé - Fixscreen® Fiberglass Fabric\* (Scenic Structure, 5% Openness)



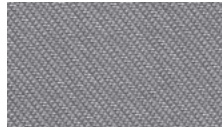
SC2002



SC0110



SC0102



SCM31



SC0207



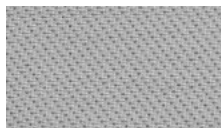
SC0707 (RAL 7038)



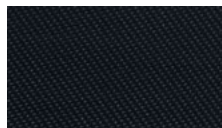
SC4949 (RAL 9006)



SC0130



SC0101 (RAL 7037)



SC3030 (RAL 7021)

## Natté - Fixscreen® Fiberglass Fabric\* (Scenic Structure, 3% Openness)



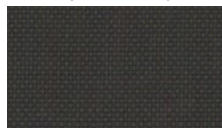
N-0202



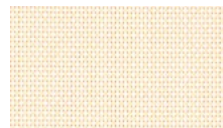
N-0207



N-0701



N-3006



N-0220



N-0201



N-3001

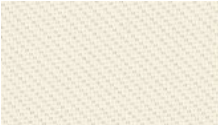


N-3030

# Finishes & Materials

landscapeforms

## Privacy - Fixscreen® Fiberglass Fabric\* (Scenic Structure, 1% Openness)



P-0202



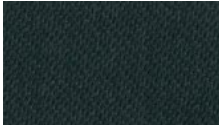
P-0707



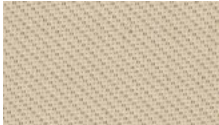
P-0101



P-0606



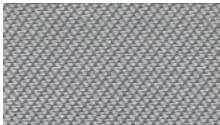
P-3030



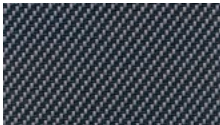
P-2020



P-0207

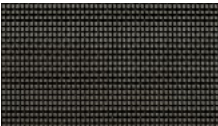


P-0102



P-0130

## Tuffscreen - Fixscreen® Insect Mesh\* (Scenic Structure)

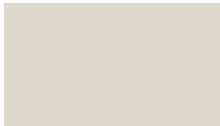


Tuffscreen CF1/CF2

## MeldStone™\* (Polished)



Natural White



Natural Ecru



Natural Grey

# Finishes & Materials

landscapeforms

## Powdercoated Metal

Powdercoated Metal Pangard II® Polyester Powdercoat is a hard, yet flexible, finish that resists rusting, chipping, peeling and fading. In addition to colors shown, a wide selection of optional and custom colors may be specified for an upcharge.

- \* All colors and patterns shown are approximate and may vary from sample and final.

## Bravo Bistro Powdercoated Metal

All components are first e-coated, then powdercoated providing surface durability, resistance to scratching and corrosion, and protection from UV light and other elements. Tables and chairs are only available in Cadmium and Carbon, colors exclusive to Bravo Bistro.

- \* All colors and patterns shown are approximate and may vary from sample and final.

## Urbidermis Powdercoated Metal

Urbidermis products feature three exclusive low sheen and gloss powdercoat colors—Aluminum, Aluminum Silver, Black, Dark Grey, Dusk, and Light Grey—chosen to accentuate the modern, minimalist design language for which the firm is known. These exclusive colors utilize the same material composition and application process as Landscape Forms' Pangard II® Polyester Powdercoat, a hard, yet flexible finish that resists rusting, chipping, peeling and fading.

## Escofet High Density Polyethylene

High-density polyethylene (HDPE) rotational molding allows the manufacture of lightweight products, it is recycled and recyclable, resistant, durable, easy to install and can also incorporate LED light for backlighting - for white only, Stul not included. It is produced in a multitude of shades, allowing you to play with color and compositions in each project. The black color is made from 100% recycled material.

## Polyethylene

Polyethylene Rotationally-molded polyethylene is produced by tumbling polyethylene powder in a mold under heat. The material provides strong structure with integral color that stands up to heavy use and is easily cleaned. Aggregate colors are subject to an upcharge.

- \* All colors and patterns shown are approximate and may vary from sample and final.
- \* Colors are not available on all products. Please contact Customer Service for more information.

## Solid Surface Marneaux®

Solid Surface Marneaux® This 100% acrylic resin solid-surface material resists scratching, staining, chipping and cracking. Weather, harsh chemicals and UV rays have virtually no effect on the "throughbody" color or structural integrity of the material. Optional colors are available at an additional charge.

## Woodgrains (Exterior, No Finish)

Exterior woods weather to a warm, pewter gray; no finish is applied so no maintenance is required. Available in Ipe, Jarrah, Domestically Sourced Thermally Modified Ash (DSTMA), and Kebony; and if applicable, Redwood, Teak, or Alaskan Yellow Cedar. Pricing for standard woods and options varies. (P) = Premium Woods

- \* All colors and woodgrains shown are approximate and may vary

## Woodgrains (Interior, LF-80 Finish)

Interior woods are finished with Landscape Forms' exclusive LF-80 wood finish, a clear, catalyzed acrylic lacquer. Available in Oak, Maple, Jarrah, and Domestically Sourced Thermally Modified Ash (DSTMA). Pricing for standard woods and options varies. (P) = Premium Woods

- \* All colors and woodgrains shown are approximate and may vary

## Polysite®

Polysite® Made of recycled 100% high-density polyethylene, polysite will not rot, splinter or crack and resists moisture, corrosive substances and insects.

- \* All colors and patterns shown are approximate and may vary from sample and final.
- \* All colors and woodgrains shown are approximate and may vary from sample and final.

## Sunbrella® Umbrella Fabric

Sunbrella® Umbrella Fabric Marine-grade fabric cover, 100% solutiondyed fiber treated for a high degree of fade-resistance; mildew proof; meets California Technical Bulletin #117 Section E (CS-191-53).

## WeatherMAX® 80

WeatherMAX® 80 is a patented outdoor performance fabric developed for demanding applications and environments. Utilized in the canopy for the Tuuci Ocean Master MEGA MAX Classic parasol, WeatherMAX® 80 delivers super high strength and durability combined with long-term color retention. WeatherMAX® 80 is water resistant, breathable, abrasion resistant, 100% recyclable, and made in the USA.

# Finishes & Materials

landscapeforms

## Phifertex® Plus

Phifertex® Plus is designed and engineered for a wide variety of applications that demand extra strength and/or dimensional stability. Phifertex Plus is highly durable, easy to clean and mildew, stain and fade resistant.

## MeldStone™

MeldStone™ (Ultra-high performance concrete) A highly engineered material that enables casting of lighter weight, thin-profile forms with exceptional strength and high resistance to compression, bending, impact and wear.

\* All colors and patterns shown are approximate and may vary from sample and final.

## Escofet Cast Stone (Socrates)

Socrates benches are manufactured from cast stone in the USA in partnership with Escofet. Cast stone is a refined and highly durable material intended to simulate natural-cut stone. Cast stone products feature high compressive strength, are resistant to weathering and absorption, and require little maintenance. Nonfading pigment options include Grey, Black, White and Beige.

## Summit Tradewind Fabric

Summit Tradewind is 100% solution-dyed acrylic fabric that is stain, mold and fade resistant, breathable, water repellent, bleach cleanable, and designed for use in both indoor and outdoor environments. Summit Tradewind fabrics achieve their performance through sustainable chemical finishing, a process that provides high resistance to weather and wear without the use of PFAS “forever” chemicals. Maintaining Tradewind fabric is simple, requiring only vacuuming to remove loose dirt and blotting with lukewarm water and mild detergent to remove light stains. Should persistent staining occur, cleaning with chlorine bleach will not affect the coloration of the solution-dyed acrylic fiber, provided it is properly diluted.

## RAL Powdercoated Metal

Aluminum components are pre-treated with Seaside Quality A and finished with RAL powdercoat. Seaside Quality A pre-treatment protects aluminum profiles against the effects of aggressive environments, such as coastal or heavy industrial areas. Colors offered are exclusive to Scenic.

## Wooddesign Powdercoated Metal

Colorfast powdercoating with woodgrain texture offers the natural warm appearance of wood, but with all the benefits and easy maintenance of aluminum. Exclusive to Scenic's roof louvers and panel louvers, wooddesign powdercoat is available in three designs, including White Oak, Natural Oak and Walnut.

## Scenic Woodgrains (Exterior, No Finish)

Exterior woods weather to a warm, pewter gray; no finish is applied so no maintenance is required. Available in Thermally Modified Ash (TMA).

## Fixscreen® Fiberglass Fabrics

Fiberglass fabrics are made of woven glass fibers with a PVC coating and are available in many colors. Fiberglass fabrics keep their shape and are resistant to moisture and heat as well as being rot-proof and color-fast. Fiberglass fabrics guarantee an excellent view to the outside. The fiberglass fabrics are also available with a Crystal window, the full width, providing a crystal-clear view to the outside.

\* All colors and woodgrains shown are approximate and may vary.

## Lol Designs High Density Polyethylene

Lol Designs High Density Polyethylene Lol Designs High Density Polyethylene is made from recycled HDPE (high density polyethylene) sourced primarily from recycled milk jugs. Please note that when the Harvest product is placed in FULL direct sun, testing has demonstrated that the following Lol HDPE colors have exhibited NO significant change of color over time: Black, Charcoal Grey, and Navy Blue. Testing has also indicated that the following HDPE colors have shown INCREASED change of color over time: Apple Red, Sunset Orange, and Leaf Green. Please note that the changing of color of the HDPE can occur at a different rate than the changing of color of the powdercoated aluminum.

## Escofet Concrete (with Acid-Etched Finish)

Escofet acid etching creates a subtle, lightly textured concrete surface finish that artfully marries the natural and built environments. Reminiscent of organic sandstone, this technique creates a “pre-weathered” finish that protects against additional weathering and whose surface color, texture and pattern remains consistent throughout long durations outside in the elements.

# Finishes & Materials

landscapeforms

## **Escofet Concrete (with Polished Finish)**

Machine polished after a double grinding-polishing process, Escofet polished concrete features a smooth, durable, non-porous finish with vibrant color, accentuated aggregate, and a bright, lustrous texture that resembles granite or marble.

## **Slimconcrete® UHPC**

Slimconcrete® is a proprietary ultra high-performance concrete (UHPC) formulation from Escofet that enables the creation of slim yet robust forms ideal for urban outdoor spaces and architectural applications. With a high-density matrix that incorporates inorganic glass fiber, Slimconcrete has three times more compressive, flexural and impact strength than conventional concrete, revolutionizing the material in terms of its slenderness, lightness, strength, durability and sustainability. Finishing techniques include etching, which produces a natural surface texture like sandstone, and soft-polishing, which results in a honed and pore-free finish with bright and intense colors. Thanks to its extreme compactness, Slimconcrete offers very high resistance to degradation, including in saline environments and throughout freeze-thaw cycles.

*Visit [landscapeforms.com](https://landscapeforms.com) for more information. Specifications are subject to change without notice. Landscape Forms supports the Landscape Architecture Foundation at the Second Century level.*  
©2025 Landscape Forms, Inc.

[landscapeforms.com](https://landscapeforms.com) | [specify@landscapeforms.com](mailto:specify@landscapeforms.com)