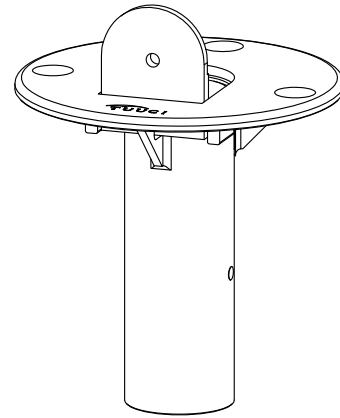
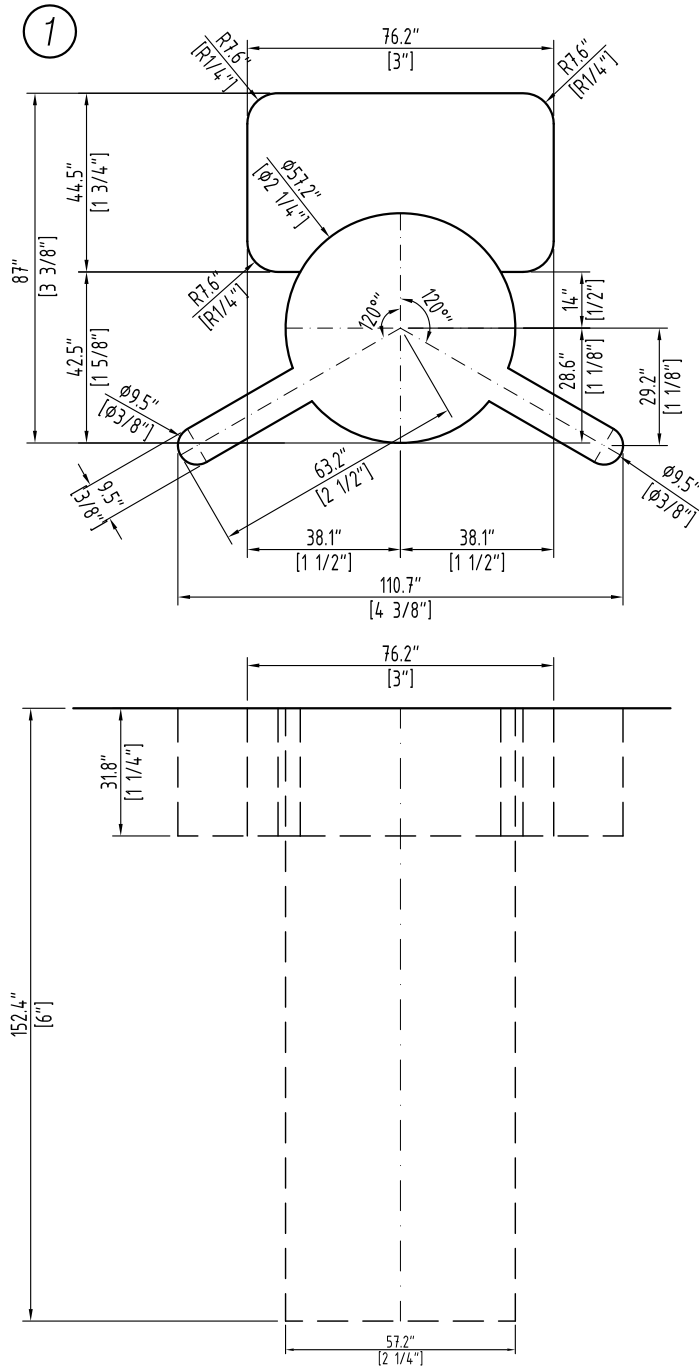


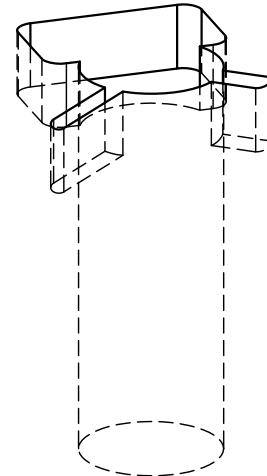
Installation Instructions

FLUSH MOUNT CENTER POST PARASOLS INSTALLATION IN CONCRETE

- ① Draw a pattern on concrete with dimensions shown on the drawing.
- ② Drill holes on concrete as per the drawing is shown.



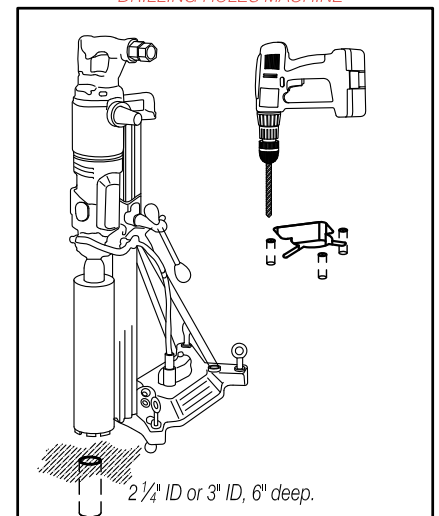
FLUSH MOUNT CENTER POST PARASOLS



FLUSH MOUNT
ID 1 3/4" PATTERN

②

DRILLING HOLES MACHINE



global headquarters

2900 NW 35th Street
Miami, FL 33142 USA
Version date: 04/01/2013 - REV: C. Page 1 of 3

t 305.634.5116
f 305.634.5119

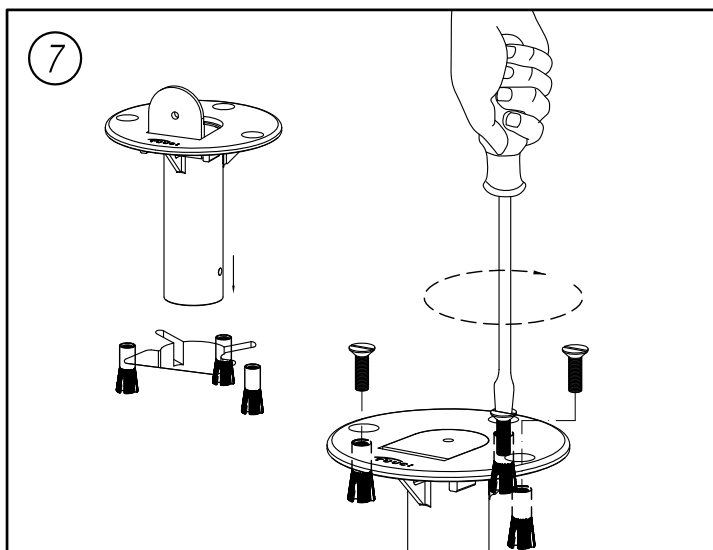
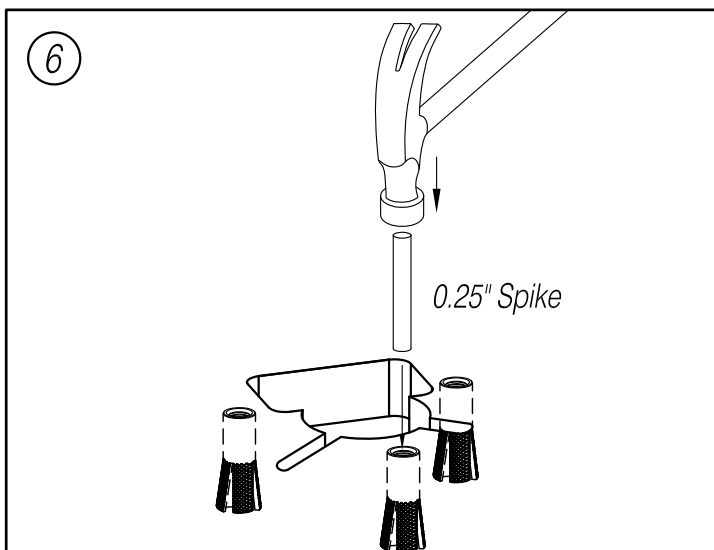
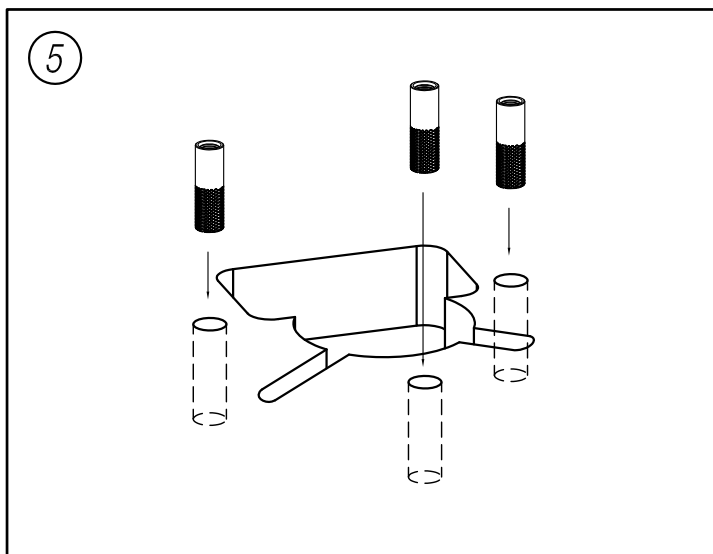
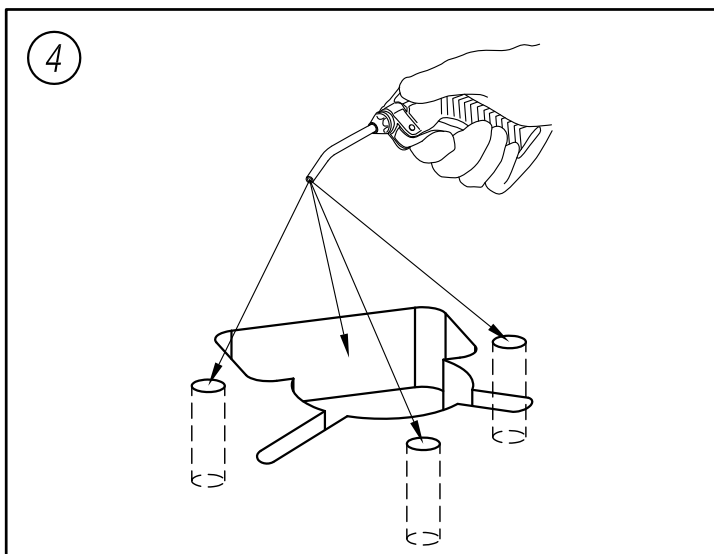
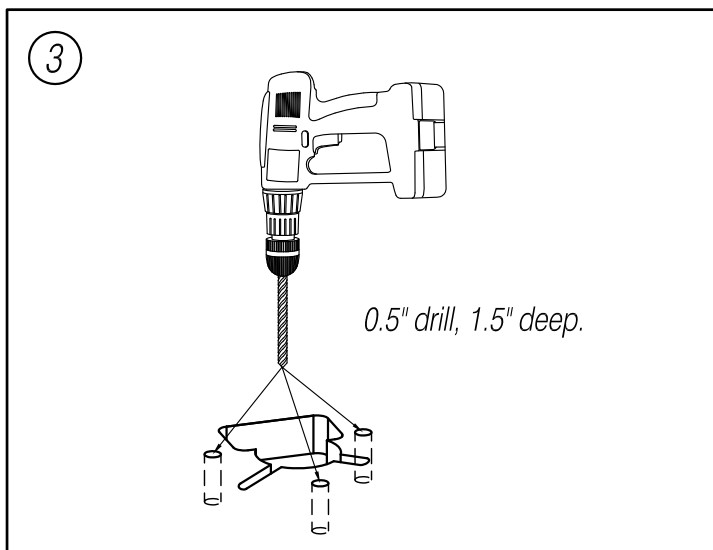
info@tuuci.com
www.tuuci.com

TUUCI
made in miami

Installation Instructions

FLUSH MOUNT CENTER POST PARASOLS INSTALLATION IN CONCRETE

- ③ Drill 3 holes in pattern with a 0.5" drill, 1.5" deep.
- ④ Clean the holes by using dry compressed air and a clean wire brush. Dust and debris left in hole will significantly reduce the holding capacity of the anchor.
- ⑤ Insert "Drop in" anchors with a 0.25" spike.
- ⑥ Hammer open flange on "Drop in" anchors.
- ⑦ Install flush mount. Then securely tighten screws (3/8"-16) with screwdriver. Retighten periodically.



global headquarters

2900 NW 35th Street t 305.634.5116
Miami, FL 33142 USA f 305.634.5119
Version date: 04/01/2013 - REV: C. Page 2 of 3

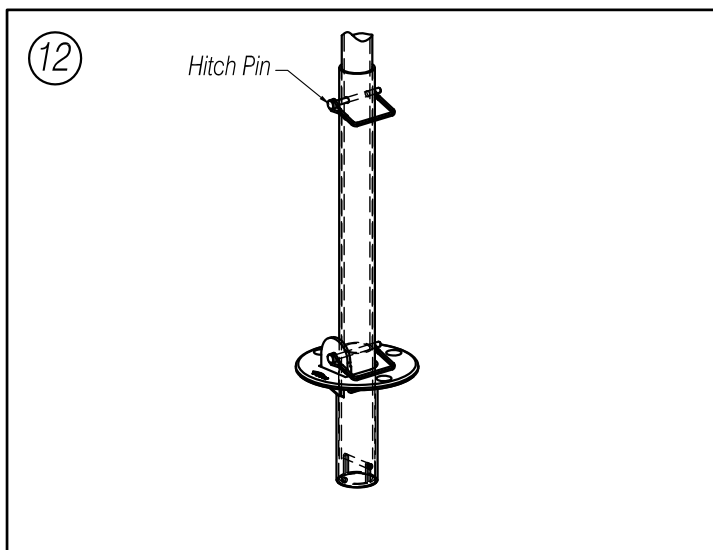
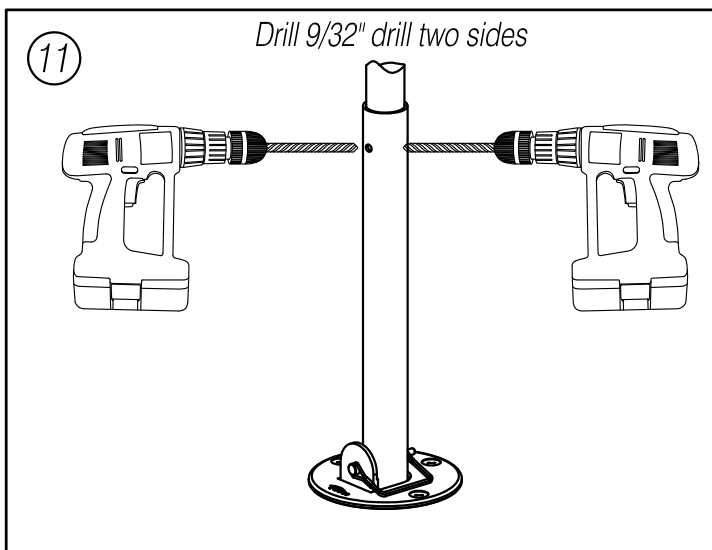
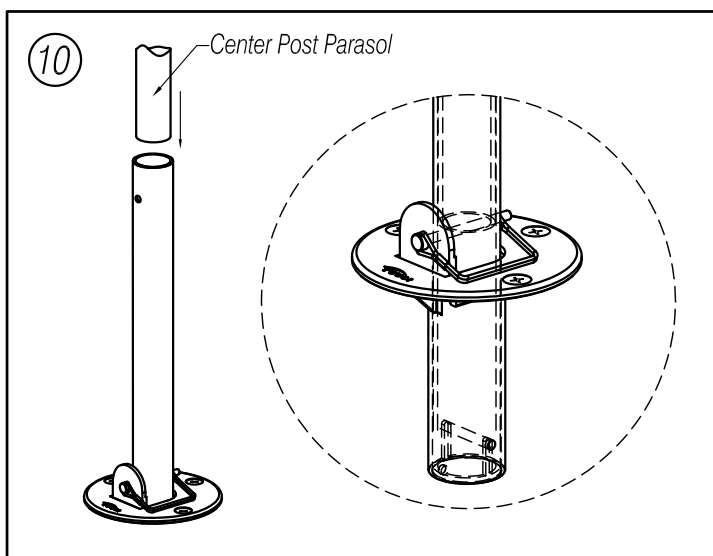
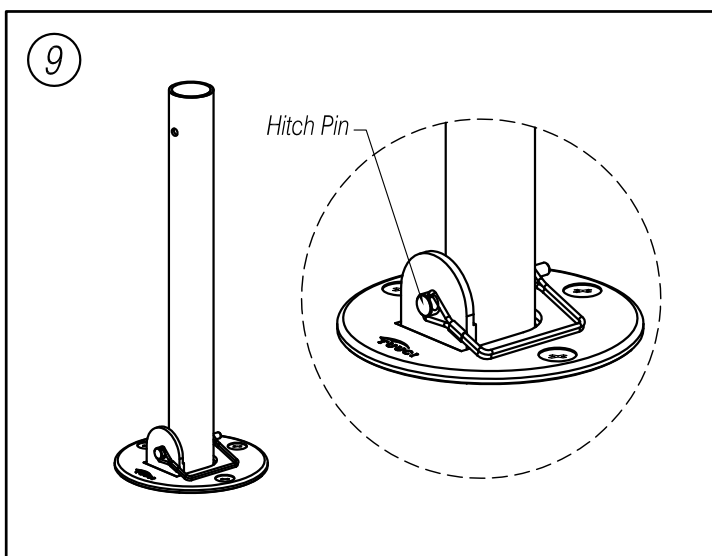
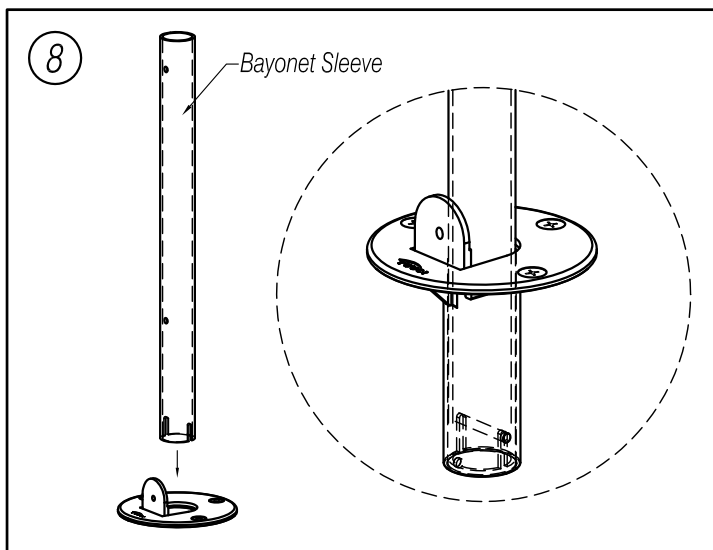
info@tuuci.com
www.tuuci.com



Installation Instructions

FLUSH MOUNT CENTER POST PARASOLS INSTALLATION IN CONCRETE

- ⑧ Insert Bayonet Sleeve as per the drawing shown.
- ⑨ Insert Hitch Pin through from Flush Mount to Bayonet Sleeve.
- ⑩ Insert center post parasol to Bayonet Sleeve and touch on Hitch Pin.
- ⑪ Adjust umbrella right direction then drill hole 9/32" on two sides of Bayonet Sleeve.
- ⑫ Insert Hitch Pin through from Bayonet Sleeve to Center Post Parasol.



global headquarters

2900 NW 35th Street t 305.634.5116
Miami, FL 33142 USA f 305.634.5119
Version date: 04/01/2013 - REV: C. Page 3 of 3

info@tuuci.com
www.tuuci.com

