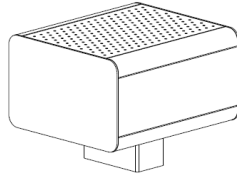
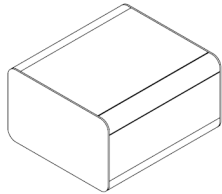


CUBE, SOLID

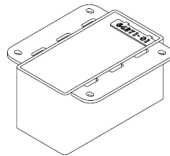


CUBE, PERF

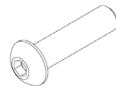
Included components:



CUBE SEAT
SOLID OR PERF – 1X



SUPPORT – 1X



5/16-18 x 1-1/4"
SOCKET BUTTON
HD CAP SCREW –
4X

Tools required for assembly

- Safety glasses
- (4) anchors per support, max $\varnothing 3/8"$
- masonry drill bit
- compressed air for clearing holes of debris
- 3/16" hex key for attaching support to seat

PROCEDURE FOR ASSEMBLY:

1. Set support column in position. Refer to site plans for correct orientation of support column in relation to cube seat. Support can be installed in two different orientations. See Fig. 1.
2. Mark anchor hole locations. Move support and drill holes according to anchor manufacturer's recommendations. Clear holes of debris. See Fig. 2.
3. Set support in position and install anchors.
4. Set cube seat on support and attach using (4) socket button head cap screws, see Fig. 3.

ASSEMBLE WITH CARE! Pangard II® Polyester Powdercoat is a strong, long-lasting finish. To protect this finish during assembly, place unwrapped powdercoated parts on packaging foam or other non-marring surface. Do not place or slide powdercoated parts on concrete or other hard or textured surface – this will damage the finish causing rust to occur. Use touch-up paint on any gouges in the finish caused by assembly tools.

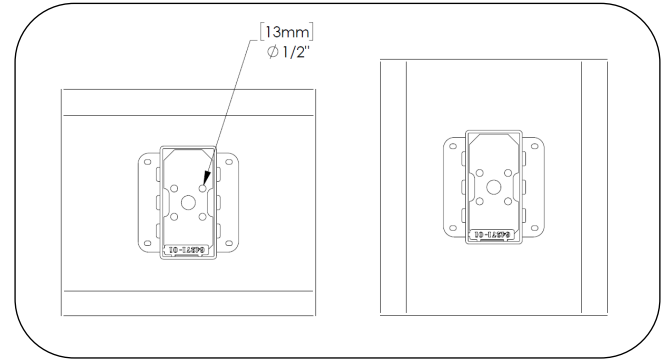


Fig. 1 – support to seat orientations

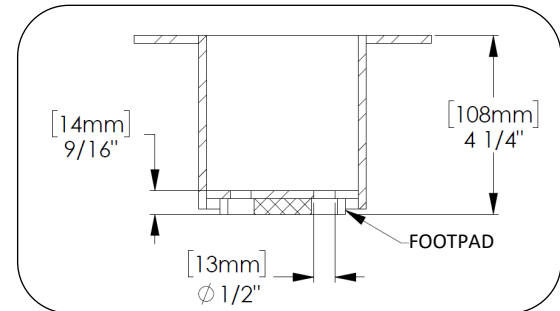


Fig. 2 – anchor detail

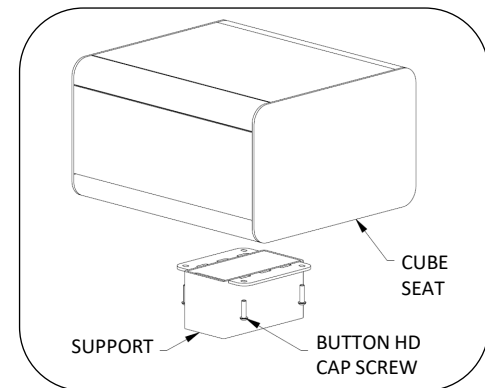


Fig. 3 – attach seat to support