

Product Data Sheet



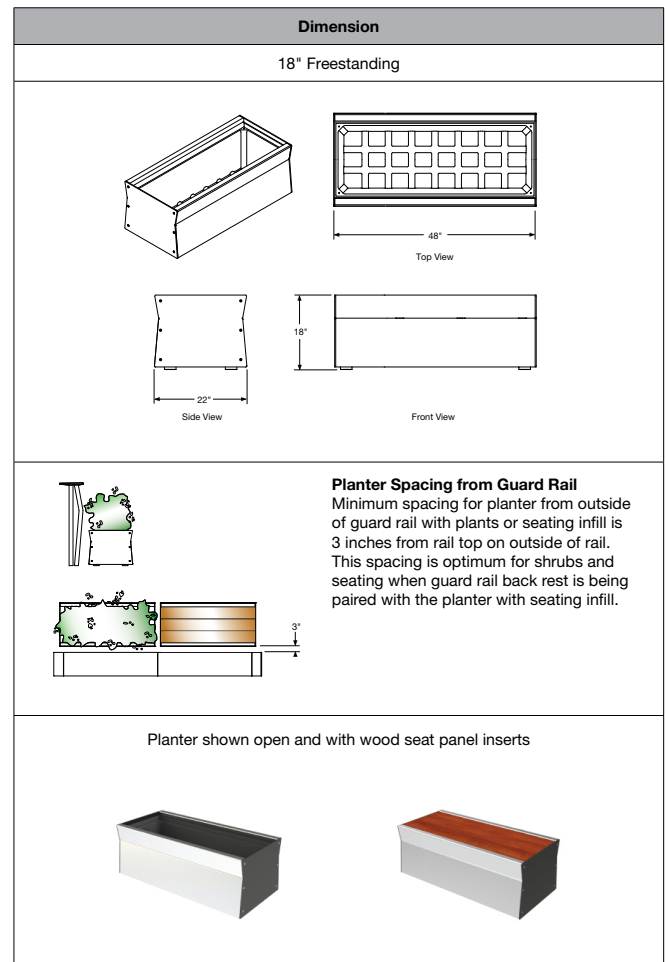
Design focus and dual function characterize Gus at his versatile best. This unusual planter functions as a frame that defines space and as furniture with the simple addition of a bench seat. Refined in form and detail, it enables the combination of greenery and camaraderie on a common plane.

Planter

- Gus planters divide space, hold plant materials, and in some cases provide seating.
- They can be used to define edges along streetscapes, demark seating areas in a park or, when placed in a row between a street and a restaurant, create protected outdoor dining areas.
- The 18" tall planter can be fitted with a wood seat insert and used with the rail system and backrest infill to create additional seating in places where people gather.

18" Freestanding

- Weight:
 - with liner: 148 lbs
 - wood (jarrah) insert: 165 lbs
- Planter length is 48"
- Planter height is 18"
- Planter depth is 22"
- Planter panels are durable aluminum sections with steel end plates secured to a steel frame.
- Planters can be ordered with a liner wood seating inserts.
- Planter with seating inserts meets or exceeds ANSI/BIFMA seating standards.
- No liner provided with seat insert.



Product Data Sheet



Finishes

- Interior woods are finished with Landscape Forms' exclusive LF-80 wood finish, a clear, catalyzed acrylic lacquer.
- Exterior woods are unfinished and will weather to a soft pewter gray, requiring no future maintenance.
- All metal is finished with Landscape Forms' proprietary Pangard II® polyester powdercoat, a hard yet flexible finish that resists rusting, chipping, peeling and fading.
- A wide range of standard, optional and custom colors are available.

Installation

- Shipped fully assembled.
- Liners do not have drainage holes. Drainage holes can be added during installation.
- Spaces at corners of liners have been provided for water line or electrical installation.
- Planters have leveling glides to allow for uneven surfaces.
- Adjustment for glides is approximately 1 inch.

To Specify

- Specify collection name, and Gus. Select powdercoat color for panels and frame, and seat, if aluminum seat is specified. Planter is freestanding. Black polyethylene liner ships with each planter unless a seat insert is specified. If wood seat is specified, check Materials/Colors on website for species and select wood type. Gus ships fully assembled. Refer to UrbanEdge Workbook for configuration details.

Designed by Gustafson Guthrie Nichol, Ltd

Click here for patent information related to this product.

Visit landscapeforms.com for more information. Specifications are subject to change without notice. Landscape Forms supports the Landscape Architecture Foundation at the Second Century level. ©2022 Landscape Forms, Inc. Printed in U.S.A.

landscapeforms.com | specify@landscapeforms.com