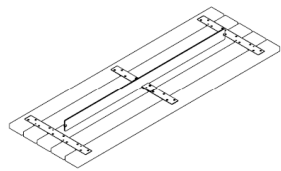
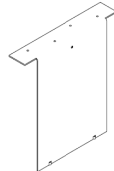
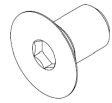
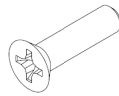


88in table

## Included components:

TABLETOP ASSEMBLY  
-1XSUPPORT  
-2XM10 x 16mm  
SCREW  
-2XM10X120MM  
THREADED ROD  
-4X1/4-20 x 1-1/8" FLAT  
HD SCREW  
-8X5/8" O.D.  
WASHER  
-8X1/4-20 HEX  
NUT  
-8X

## Tools required:

- Phillips screwdriver
- Hex key 6mm
- 7/16" wrench
- For anchor holes:  $\varnothing 7/16"$  drill
- Chemical anchoring adhesive, if specified
- Proper personnel for lifting table

**ASSEMBLE WITH CARE!** Powdercoat is a strong, long-lasting finish. To protect this finish during assembly, place unwrapped powdercoated parts on packaging foam or other non-marring surface. Do not place or slide powdercoated parts on concrete or other hard or textured surface – this will damage the finish causing rust to occur. Use touch-up paint on any gouges in the finish caused by assembly tools.

## TABLE ASSEMBLY PROCEDURE:

**Note:** Refer to bench installation guide for bench assembly if using backless Bancal bench with Bancal picnic table. Refer to Fig. 3 for recommended bench and table spacing. Site conditions may require different spacing.

1. Orient supports as shown in Fig. 1. From the top side, install (4) 1/4-20 x 1-1/8" flat head machine screws per support between boards as shown in Fig. 2.
2. Install washers and nuts on underside of supports, see Fig. 2. Keep hardware loose.
3. Install M10 flat head screw on each side of cross brace, securing support to cross brace as shown in Fig. 2. Fully tighten.
4. Tighten support hardware.

## INSTALLATION PROCEDURE:

1. Set table in position. Mark hole locations. Move table.
2. Drill holes as shown in Fig. 1. Clear holes of debris.
3. Install threaded rods into supports, see Fig. 1.
4. Lift fully assembled table into position, setting threaded rods in holes.

## For optional anchoring adhesive installation:

1. Clean the drilled holes according to adhesive manufacturer's instructions.
2. Dispense adhesive into the holes, filling from the bottom to 2-1/2" from the top.
3. Using proper personnel, move the table into position. Adhesive should rise to the top of the hole. Wipe away excess adhesive from supports.

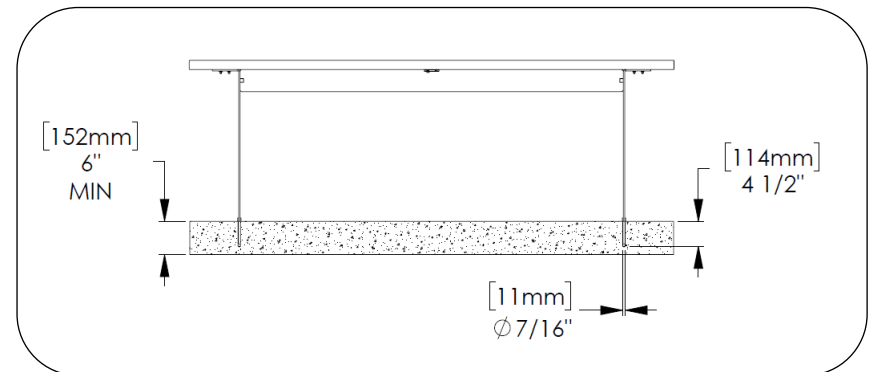


Fig. 1 – Drilled hole size, support orientation

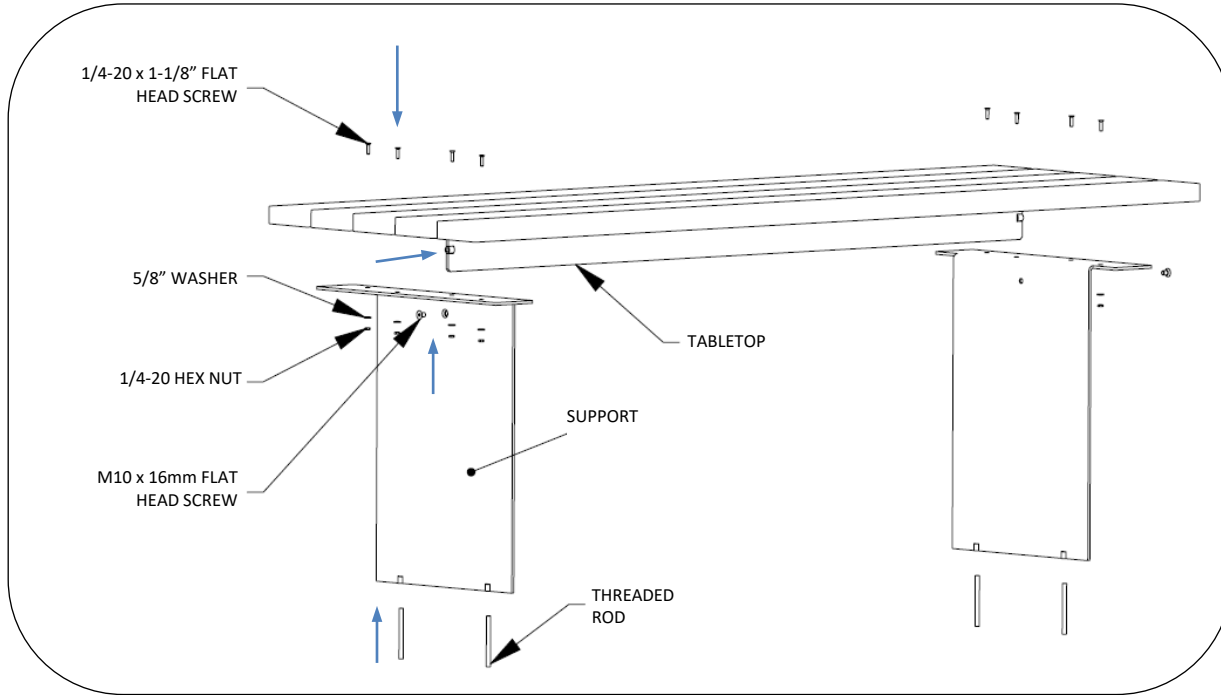


Fig. 2 – Assemble table

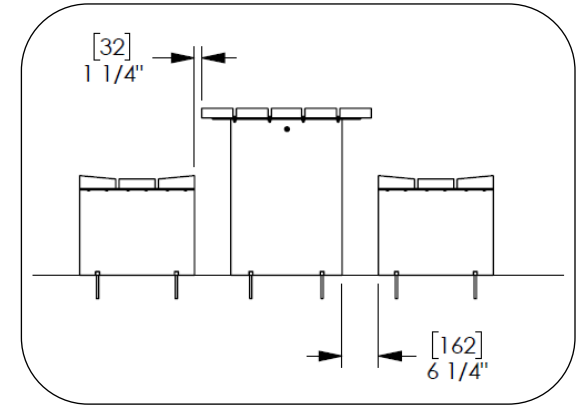


Fig. 3 – Recommended spacing for table with benches