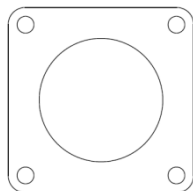
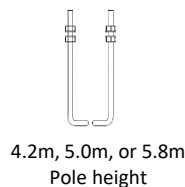


Included components



1x – wooden drill template



7.6m Pole Height (5in/7in dia)
9.2m Pole Height (5in/8in dia)

Included: hardware is galvanized

4.2m, 5.0m and 5.8m pole: (4) anchor bolts, 3/4"-10 x 17" x 3" hook ,
(8) heavy hex nuts, 3/4" x 10, (8) flat washers, .81 ID" x 1.5" OD x 0.13" thick
7.6m (5in/7in) pole and 9.2m (5in/8in) pole: (4) anchor bolts, 1"-8 x 36" x 4" hook,
(8) heavy hex nuts, 1" x 8, (8) flat washers, 1.06" ID x 2.00" OD x 0.15" thick

Tools Required

- Safety glasses
- Wrenches, 1-1/4" for 4.2m, 5.0m or 5.8m (5in) pole
- Wrenches, 1-5/8" for 7.6m (5in/7in) pole or 9.2m (5in/8in) pole
- Level

LIGHTING LAYOUT RECOMMENDATIONS:

Refer to the product data sheet available at www.landscapeforms.com for recommendations for light pole spacing.

Landscape Forms is not responsible for site preparation and footings.

WARNING! Pole mounted luminaires must be attached either before or *immediately* after pole installation. Failure to do so may cause vibration damage to the pole and will void the pole warranty.

INSTALLATION PROCEDURE FOR ANCHOR BOLTS:

1. Prepare footing as required by local codes.
2. Install anchor hooks, hex nuts, washers and wooden template as shown in Fig 3 and Fig. 4. Level template in all directions. **Note:** template thickness is less than base plate thickness. Dimensions given account for the difference.
3. After footing has properly cured, remove wooden template. Do not remove lower hex nuts or washers.

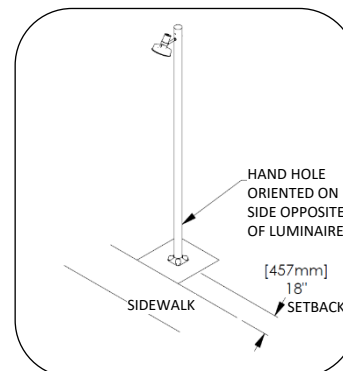


Fig. 1 – Sidewalk setback

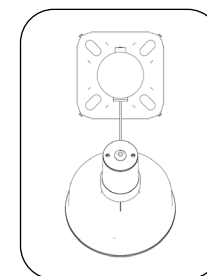


Fig. 2 – Base plate orientation to luminaire

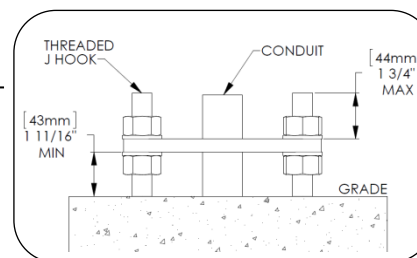


Fig. 3 – Anchor install detail, 4.2m, 5.0m or 5.8m pole

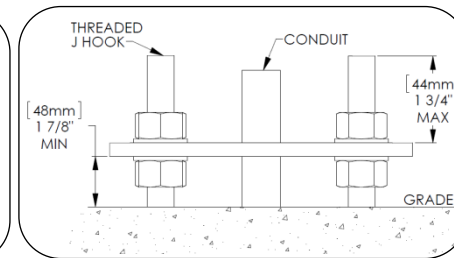
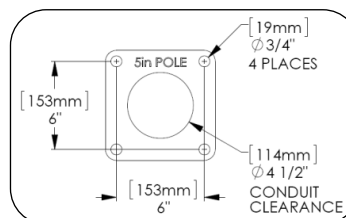
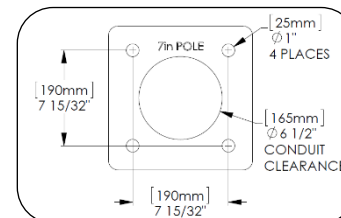


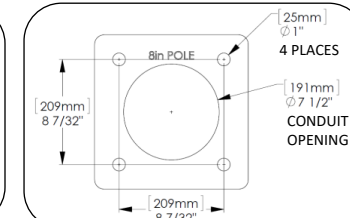
Fig. 4- Anchor install detail, 7.6m or 9.2m pole



5" diameter pole (4.2m, 5.0m or 5.8m ht)

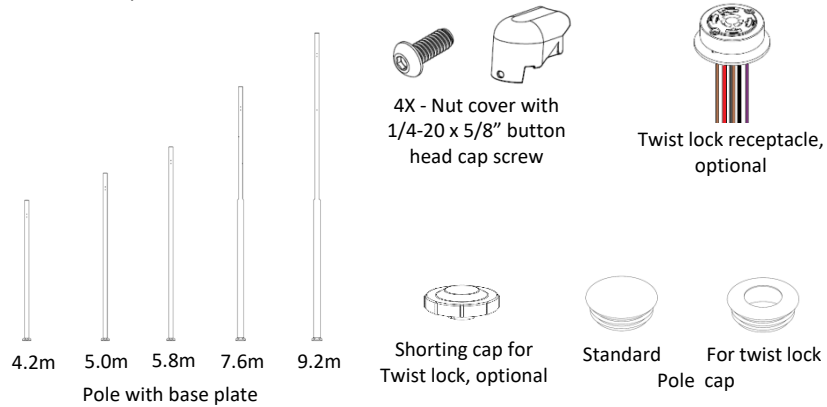


7" diameter base pole (7.6m ht)



8" diameter base pole (9.2m ht)

Included components



Tools Required

- Safety glasses
- Wrenches: 1-1/4" for 4.2m, 5.0m and 5.8m poles or 1-5/8" for 7.6m (5in/7in) and 9.2m (5in/8in) pole
- Wiring tools and connectors
- Proper personnel, crane or lift for hoisting unit onto anchors
- Level
- Dimming control, if required
- Hex key 5/32" for nut covers
- Twist lock photo eye, if required
- 4mm and 6mm hex keys
- 13mm wrenches
- 17mm socket wrench

Landscape Forms is not responsible for site preparation and footings. Refer to the installation guide for the Arne light anchor kit for installing the anchor bolts.

CAUTION! This unit is heavy. To avoid injury or damage to the finish, we recommend using a crane or lift for hoisting the unit onto the anchors.

WARNING! Pole mounted luminaires must be attached either before or *immediately* after pole installation. Failure to do so may cause vibration damage to the pole and will void the pole warranty.

ASSEMBLE WITH CARE! To protect this finish during assembly, place unwrapped powdercoated parts on packaging foam or other non-marring surface. Do not place or slide powdercoated parts on concrete or other hard or textured surface – this will damage the finish causing rust to occur. Use touch-up paint on any gouges in the finish caused by assembly tools.

INSTALLATION PROCEDURE FOR LIGHT POLE:

1. Lift the light pole into position over the installed anchors as shown in Fig. 1. Ensure that the base plate is resting on all four washers.
2. Install washer and hex nut as shown in Fig. 5.
3. Plumb and level the pole and tighten all anchors.
4. Install luminaire. Refer to separate luminaire installation guide for mounting luminaire to pole.
5. Make electrical connections. Refer to wiring diagram on luminaire installation guide.
6. Install the top cap on the pole (shipped with the pole). If the unit has a twist lock receptacle, assemble the receptacle and the top cap as shown in Fig. 6 and connect wiring before installing the top cap.
7. Install the nut covers as shown in Fig. 7.

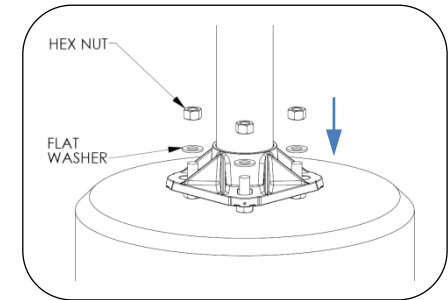


Fig. 5 – Install pole

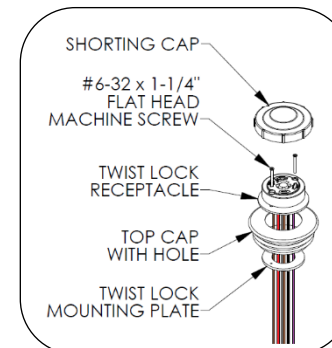


Fig. 6 – Install twist lock receptacle to top cap

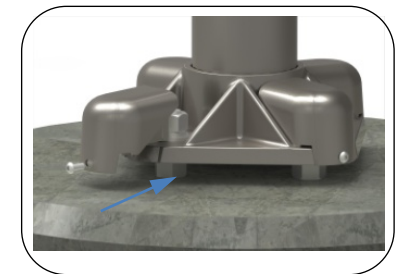


Fig. 7 – Install nut covers

Landscape Forms is not responsible for site preparation and footings.

WARNING! Pole mounted luminaires must be attached either before or *immediately* after pole installation. Failure to do so may cause vibration damage to the pole and will void the pole warranty.

Calculations per AASHTO 1994, assuming base of the pole is at grade level.

Pole Size	Wind Speed	Max luminaires	Base Overturning Moment (ft-lbf)	Base Shear (lbf)	Max EPA (ft²)	Max luminaire weight (lbs)
5" dia x .188" wall x 5.8m (228")	110 mph w/ 1.3 gust	2	5623	403	3.82	80.66
7" dia/5" dia x .188" wall x 7.6m (299")	110 mph w/ 1.3 gust	2	8659	482	3.82	80.7
8" dia/5" dia x .188" wall x 9.2m (362")	110 mph w/ 1.3 gust	6	13017	608	4.23	104.7
5" dia x .120" wall x 5.0m (197")	90 mph w/ 1.3 gust	1 Indirect	2896	259	3.01	48
5" dia. x .120" wall x 5.8m (228")	90 mph w/ 1.3 gust	1 Indirect	3731	291	3.01	48