

The image shows the exterior of a modern building with a light-colored, horizontally-slatted facade. A concrete staircase with a metal railing leads up to a glass-enclosed entrance. The words "SCIENCES BUILDING" are printed in large, bold, black letters on the concrete wall below the stairs. In the foreground, a person is walking quickly, creating a motion blur. Several black, cylindrical bollards are spaced out on the concrete plaza. A tall, black, cylindrical light fixture stands on the right side of the frame. The sky is clear and blue.

**SCIENCES BUILDING**

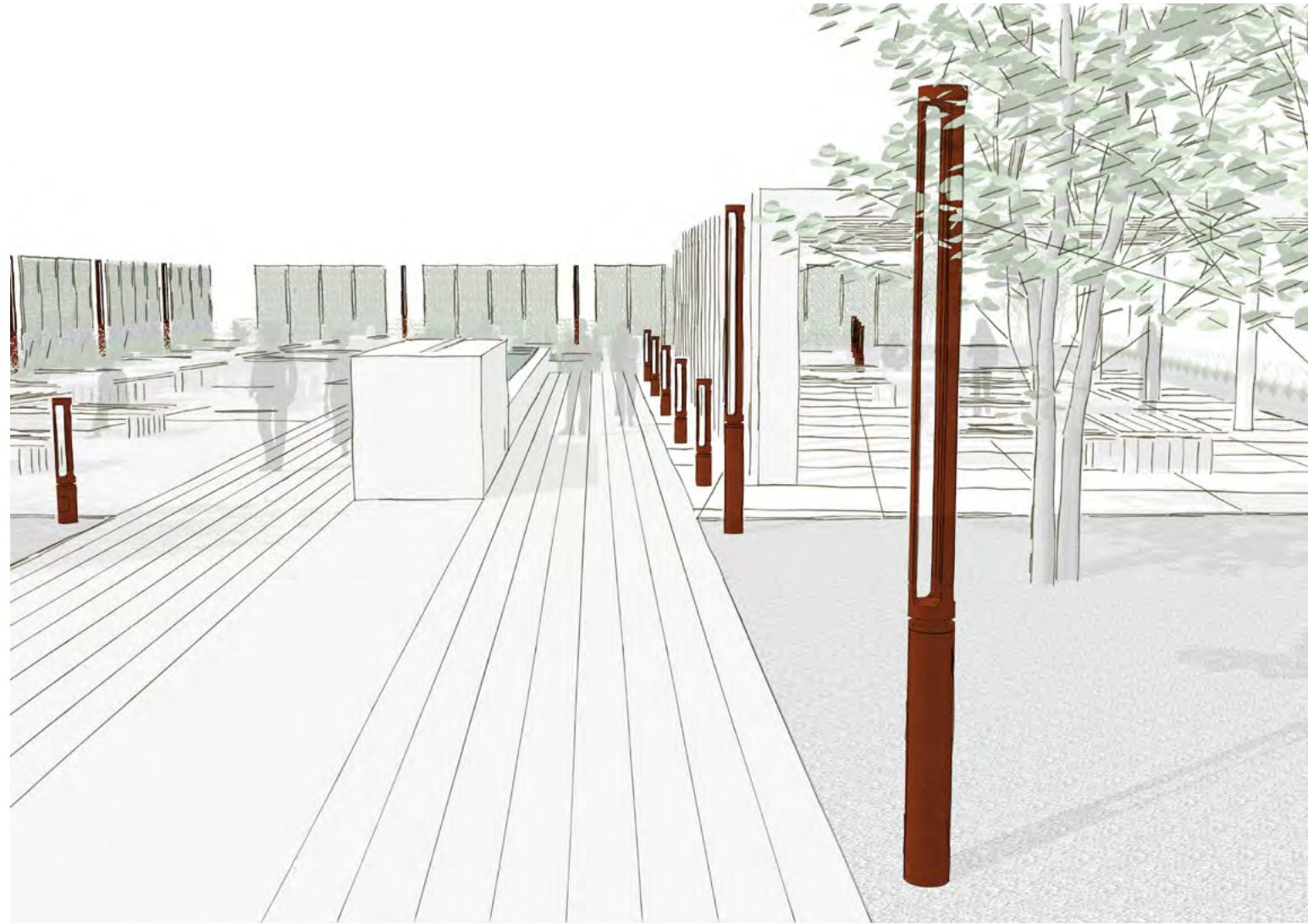
landscapeforms

# Outline Application Guide



## Healing Garden Installation

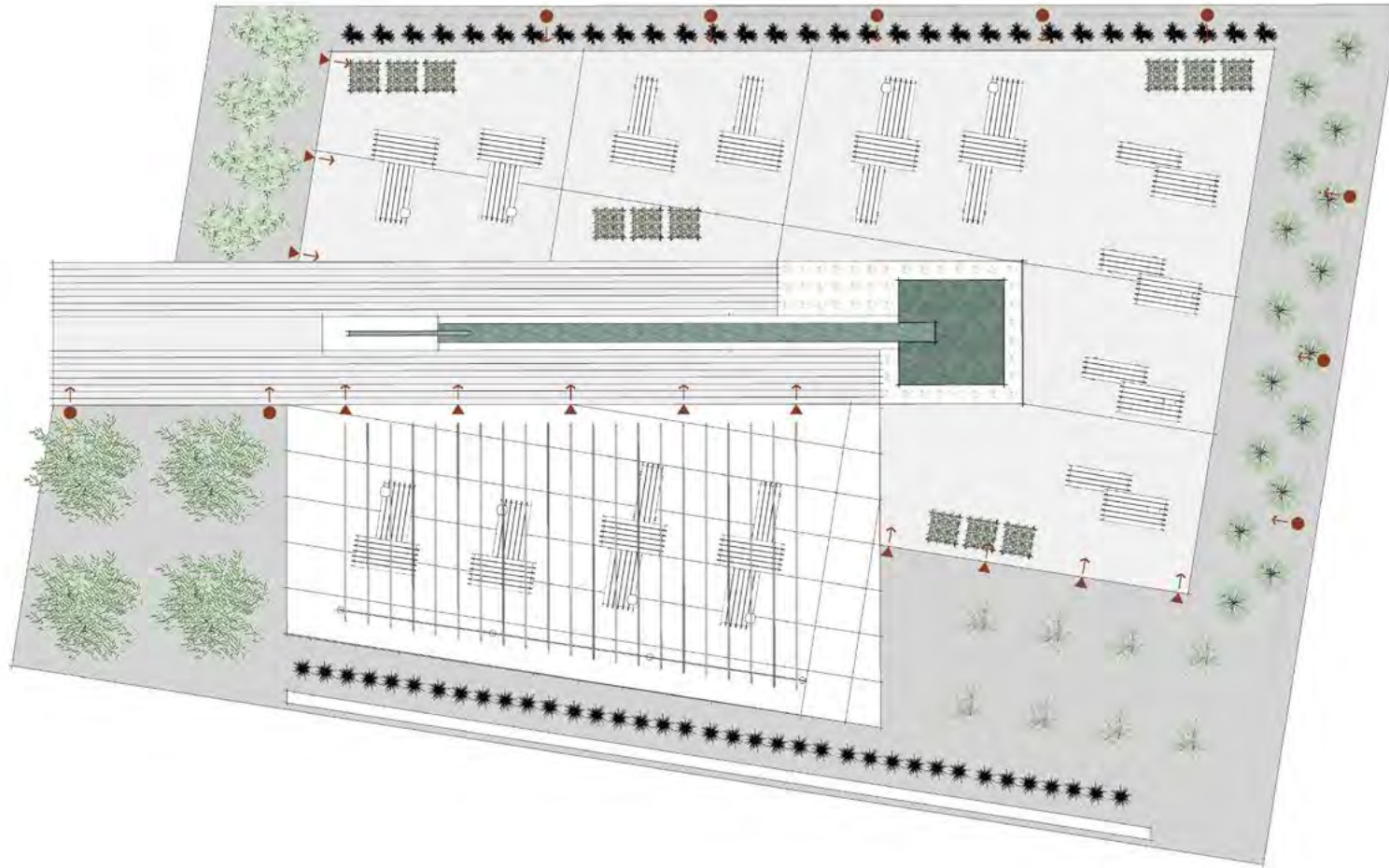
The slim and self-contained vertical silhouette of Outline seamlessly integrates into more intimate outdoor public spaces, adding sculptural interest in a thoughtfully modern context. The 4' bollards illuminate pathways and secluded seating within the space, and while highlighting features of the surrounding landscape. The vertically illuminated elements of Outline, at both bollard height and at 10' pedestrian scale, help define the depth and scope of the space, while subtly marking points of egress, enhancing visual comfort, and promoting the thematic continuity of the space.











- Key**
- 4' Bollard  →
  - 10' Pedestrian Pole  →
  - 12' Pedestrian Pole  →



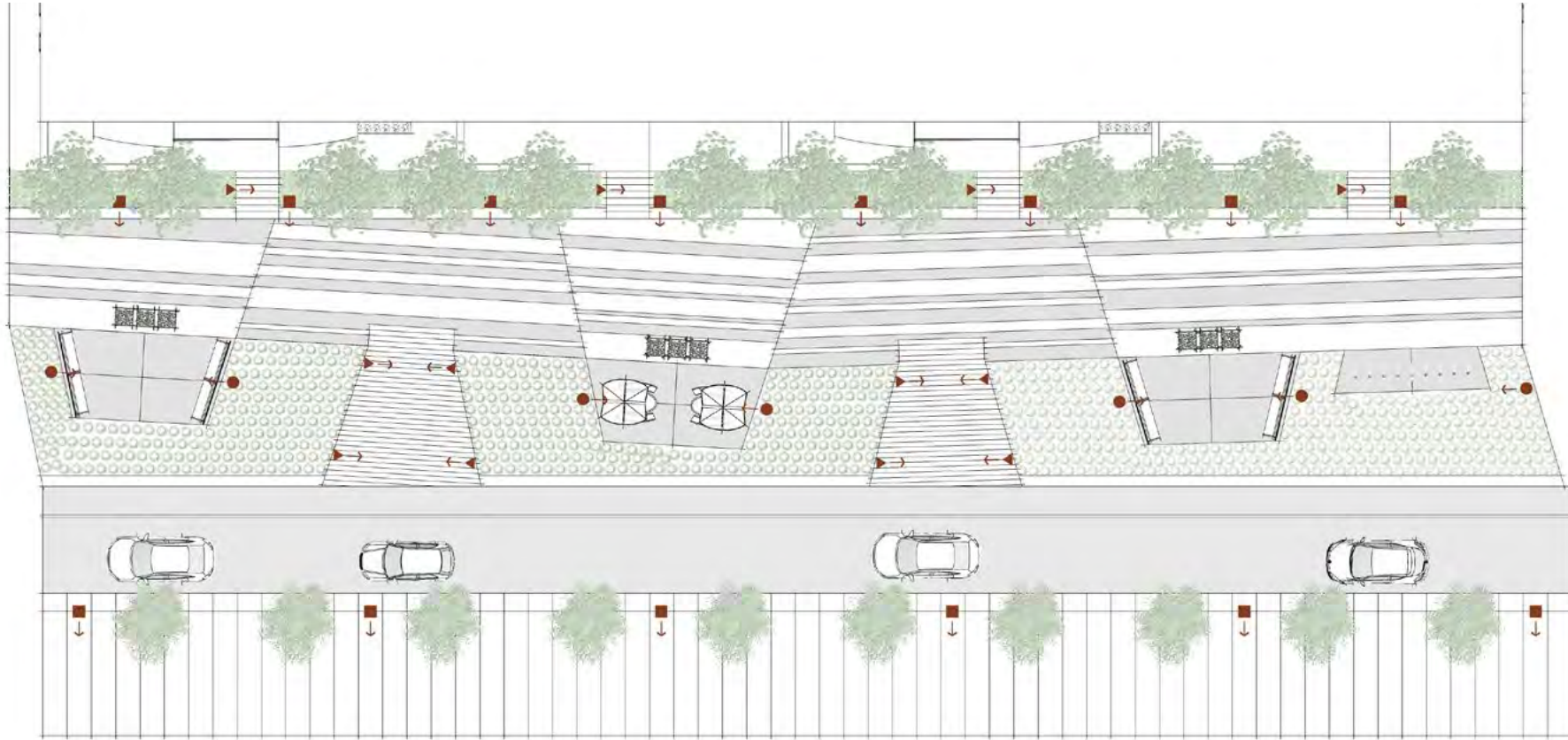
## Linear Park Installation

In linear parks where pedestrian, cyclist, and vehicle traffic intersect, Outline offers a balanced solution that enhances safety and navigability. Along the walk and cycleway, 12' poles provide even area illumination, extending their reach to adjacent roadways. At pedestrian crossing points, 4' bollards offer crucial lighting cues, highlighting key transitions in the space. To create a sense of openness and comfort, 10' poles illuminate seating areas that open onto main pathways, ensuring a smooth flow of movement while maintaining a warm, inviting atmosphere for everyone making use of the space.









- Key**
- 4' Bollard  →
  - 10' Pedestrian Pole  →
  - 12' Pedestrian Pole  →

## Main Street Plaza Installation

Outline transforms busy multi-use pedestrian spaces into vibrant, well-lit environments. The sculptural presence of 4' bollards mark the entry to the plaza and line sidewalks and vehicular approaches, marking a clear transition to pedestrian areas. Inside the plaza, 12' poles establish a rhythmic cadence, enhancing way-finding while maintaining consistent lighting levels. Seen through the trees, additional 12' units illuminate breaks in the plantings, guiding pedestrians along designated walkways. Outline's innovative design controls glare and backlight (B1 Max, G0 max), safeguarding the enjoyment of nearby residents while promoting lively engagement in an urban setting.









- Key**
- 4' Bollard
  - 10' Pedestrian Pole
  - 12' Pedestrian Pole



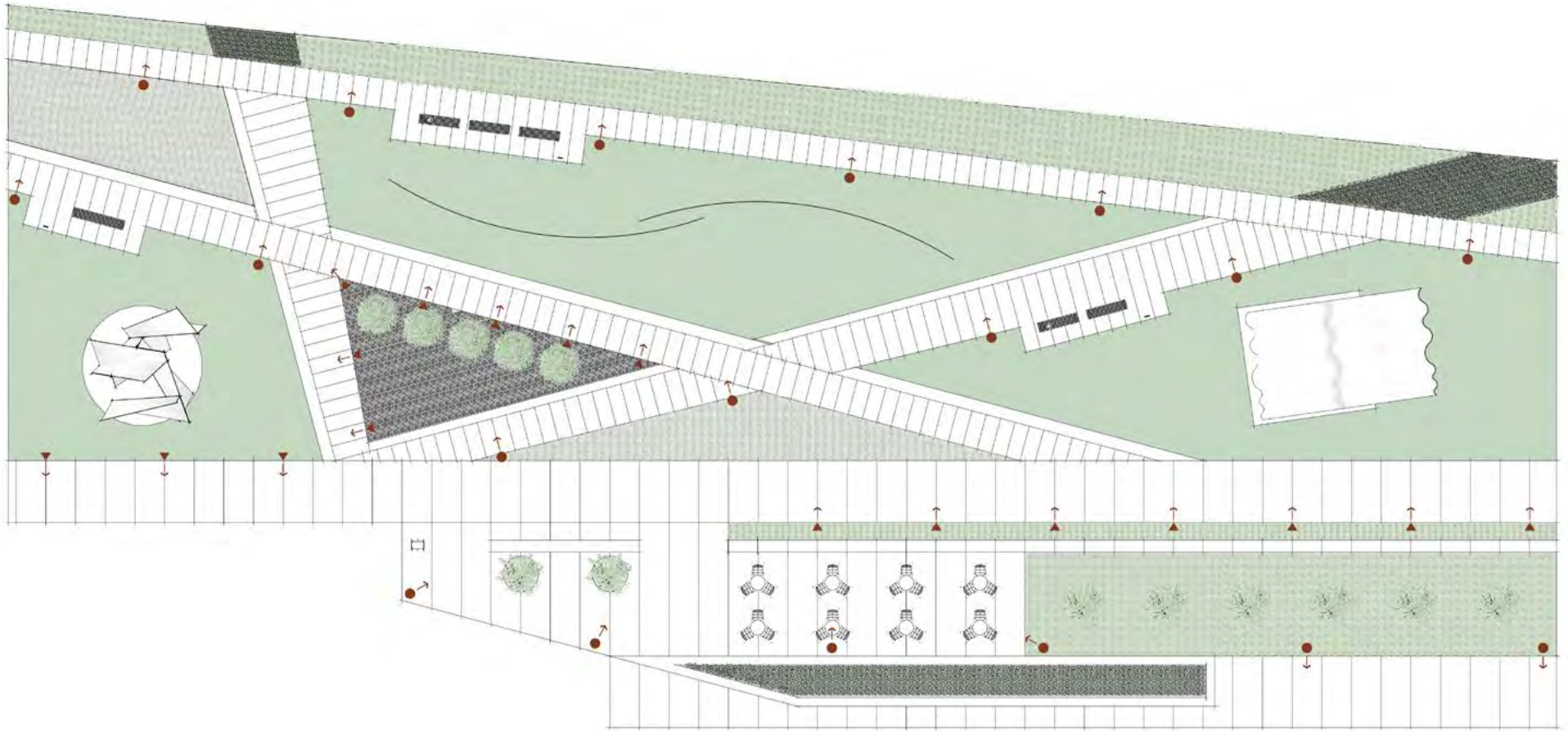


## Sculpture Park

Outline's illuminated vertical elements and modern design add depth and dimension to a complex environment. Street-facing boundaries are set off by 10' poles, drawing attention to the park, inviting passersby to step in, engage, and explore. Pole height continuity from the street to the park's interior provides a clear perspective and through line, offering visibility from a distance while highlighting the park's unique offerings. Pathways and connectors are illuminated by 4' bollards, guiding visitors as they move between installations and information markers, ensuring a safe, visually appealing experience that complements the public celebration of artistic vision and talent.







- Key**
- 4' Bollard  →
  - 10' Pedestrian Pole  →
  - 12' Pedestrian Pole  →

landscapeforms



# Outline Application Guide